



Klarity Medical Products, LLC  
600 Industrial Parkway  
Heath, OH 43056  
  
Toll-free: 877-599-8905  
Tel: 740-788-8107  
Fax: 740-788-8109  
  
sales@klaritymedical.com

MC2201 2023

BETTER **PRODUCTS**  
FOR BETTER **CARE**



[WWW.KLARITYMEDICAL.COM](http://WWW.KLARITYMEDICAL.COM)



## Who We Are

Klarity Medical Products manufactures and distributes a variety of products serving the needs of radiation therapists, occupational therapists, hand therapists, and other medical specialists. Through our work with cancer centers worldwide, Klarity is a global leader in manufacturing and developing thermoplastics and positioning devices.

## Our History

Our technical expertise dates back to the 1960's, when Dr. Lester M. Larson served as a research chemist at the Dupont Company in Wilmington, Delaware. While there, he created the world's first thermoplastic splints in collaboration with Occupational Therapist Dorothy Kester, O.T.R. His work provided the foundation for all of today's low-temperature thermoplastic splinting materials.

Dr. Larson and his son, Peter Larson, founded Larson Medical Products in Columbus, Ohio in 1989, and in 2000 a collaboration began with Dr. Deren Zhan of Guangzhou, China. This brought new manufacturing capacity and the expanded product lines you see in this catalog.

Today, the name Klarity® symbolizes our dedication to technological advancement and excellence. We are committed to serving the world with the highest quality medical thermoplastics and positioning devices, always seeking to improve patient care.

## Contents:

|                              |    |
|------------------------------|----|
| Baseplates and Overlays..... | 5  |
| Masks.....                   | 29 |
| Klarity Cushions™ .....      | 51 |
| Vacuum Bags .....            | 61 |
| Ovens.....                   | 67 |
| Accessories .....            | 73 |
| Ordering Information.....    | 83 |

## Contact

For more information or to place an order, please contact your sales representative:

Klarity  
600 Industrial Parkway  
Heath, OH 43056  
Toll-free: 877-599-8905  
Tel: 740-788-8107  
Fax: 740-788-8109  
hello@klaritymedical.com



For years, Klarity has been a global leader in the field, with a primary focus on therapists and patients. Our state-of-the-art designs are revolutionizing the way therapists do their jobs. Our products also provide safer, more precise, and more comfortable options for patient positioning. At every turn, we at Klarity work hard to ensure a higher standard of care. Always improving. Always better.

### Innovating for you

Klarity's heart and soul lies in innovation. At a time when water baths offered the only way to heat thermoplastic immobilization devices, we envisioned a new method: dry heat. Klarity pioneered the design and manufacture of dry-heat ovens for the preparation of thermoplastics, and in the process we helped optimize therapist workflow and minimize patient risk of bacterial infection. Likewise, our Klarity Cushions™ have transformed patient positioning. By creating a warm, dry, and easily moldable neck cushion with even density, we've made life much easier for therapists and much more comfortable—even calming—for patients. These products demonstrate Klarity's commitment to thinking outside the box.

### Responding to your needs

When changes come, as they inevitably do, Klarity is quick to respond. We pride ourselves on being nimble, quickly adapting to the latest developments in the field of radiation therapy. We also respond to individual therapists' needs by manufacturing custom products. Klarity works with clinics of any size to develop customized product designs.

### Making good products great

We at Klarity love to take good products and make them better. We've improved our masks at every turn, creating a range of the highest-quality thermoplastics. Beyond our standard Klarity White™, we developed Klarity Green® thermoplastic materials, which have an improved working time, and we've also created Klarity Blue™, an ultra-strong mask with the least amount of shrinkage. We also designed our vacuum bags with more durable material, so they are easier to clean and don't have to be replaced nearly as often. Finally, with our baseplates, we've increased the indexing potential without making things more complicated for therapists. Small, simple changes can make a world of difference.

### Upholding the highest standards

We design all of our products in accordance with the most up-to-date science on record. We also certify that our products adhere to all national and international compliance standards. But we never stop there. At Klarity, we hold ourselves and our products to the highest standard: our own. We don't sell products that we don't like. Period. If a preliminary product design doesn't suit the complex needs of today's radiation therapists, or if it doesn't pass muster with patients, we make adjustments until both therapists and patients are happy. We only settle for the best we can offer. And that's our promise to you.

### Klarity: Better Products for Better Care.

# Baseplate Solutions

## PROTON

Promise System ..... 6

## SBRT

SBRT System ..... 8

## HEAD & NECK

Optek™ System ..... 10

SRS Adaptor ..... 11

Optek™ Demi Baseplate ..... 12

MultiFix™ Head-Only Baseplate ..... 13

## BREAST & TORSO

Athena Supine Breast System ..... 14

WingSpan™ Baseplate ..... 16

## PELVIS & EXTREMITIES

Leg Positioner ..... 17

PelvicFix™ Baseplate ..... 18

## MEDIBORDS: ..... 19-25

Mirak S1 MRI Medibord Overlay

Mirak S2 MRI Medibord Overlay

Kuma MRI Medibord Overlay

Avior P1 MRI Medibord Overlay

Avior P2 MRI Medibord Overlay

Vega PET-MRI Medibord Overlay

Avior P2X PET-MRI Medibord Overlay



## Klarity PROMISE™ System for Proton Therapy

The Klarity PROMISE™ System is an innovative system for patient positioning during Proton Therapy Treatment.



### Klarity Promise™ System R680-ACF

The PROMISE™ System features a lightweight baseplate designed for proton beam compatibility. Baseplates are available in carbon fiber, MR-compatible fiberglass, and an insert-style for direct couchtop treatment. All baseplates come with comfortable, easily adjustable ergonomic hand grips.

Masks fit into the baseplate securely and feature our signature non-stick Klarity Green® thermoplastic with comfortable working time and less shrinkage. Additionally, Klarity Cushions™ fit into the head-cup for custom molding around the neck and shoulders.

### PROTON-K MASKS

Compatible with the Klarity Promise™ Proton System



**RG-PH-2436C**  
Green Proton-K Head Mask  
36% perforation  
2.4mm  
10 masks/case



**RG-PS-2436C**  
Green Proton-K Head & Shoulder Mask  
12% perforation  
2.4mm  
10 masks/case

**RG-PH-3242C**  
Green Proton-K Head Mask  
42% perforation  
3.2mm  
10 masks/case

**RG-PS-3242C**  
Green Proton-K Head & Shoulder Mask  
42% perforation  
3.2mm  
10 masks/case

Klarity also offers compatible masks for other proton systems. See page 30 for all Klarity proton masks



# Klarity<sup>®</sup> SBRT System

The Klarity SBRT System is simple to use, highly indexable, and easily adjustable.



## Klarity SBRT System R62400-3CF

The SBRT System includes the Carbon Fiber Baseplate, the Klarity WingSpan™ Baseplate with accompanying WingSpan™ vacuum bag, an adjustable belly bridge with compression paddle, respiratory belt, an adjustable knee bridge with vacuum bag, and a movable foot positioner. The system also comes with two indexing bars, and it is compatible with standard thorax masks and Silverman headrests.

The Carbon Fiber Baseplate is lightweight and durable, with handgrip holes on either side for easier placement and hanging options. The SBRT Baseplate indexes to the couch top in two places, and scalloped edges allow the belly and knee bridge to be indexed in the best position for the patient. The height of the belly and knee bridges can be adjusted quickly, and the bridges lock and unlock without fuss. The SBRT System is also equipped with an ergonomic belly compression paddle and a respiratory belt designed to maximize patient comfort while providing necessary immobilization.

220cm (Length) x 53cm (Width)



## INCLUDED COMPONENTS:

### WingSpan™ Baseplate

and

**R7644-32.5BC  
SBRT Vacuum Bag**  
136.5x90cm  
32.5 liter fill



**Belly Bridge**  
with compression paddle



### Respiratory Belt



**Knee Bridge**  
and Knee Bridge  
Vacuum Bag



### Knee Cushion



**Foot Positioner**



### SBRT Indexing Bars



## ALSO AVAILABLE AS MR COMPATIBLE

### Klarity MR SBRT System R62400-3GF

The new Klarity MR SBRT System is simple to use, highly indexable, and easily adjustable.

220cm (Length) x 53cm (Width)



# Klarity Optek™ System

Optimal stability for the head, neck, and shoulders



- Enhanced indexing
- Comfortable shoulder retraction
- Strong and durable

### Klarity Optek™ System R630-3SCF

The Klarity Optek™ System is a comfortable and adaptable S-type Overlay for head and neck treatments. The Carbon Fiber construction has enhanced strength and durability. The system is ideal for IMRT and conformal treatments in a 360° arc and is dual-configured for adult and pediatric treatments. The lower portion gently tapers for patient comfort and the overlay is equipped with additional indexing around the edges. The Optek System is extremely lightweight and CT-compatible with excellent attenuation factors. Comfortable and adjustable hand grips assist with shoulder retraction. The Optek System is compatible with all S-type masks.

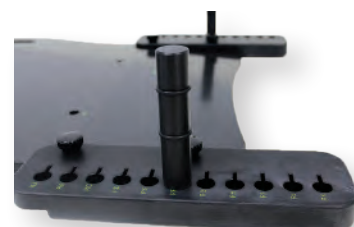
105cm (Length) x 61cm (Width)

### INCLUDED COMPONENTS:

**Overlay**  
**Handgrips**



**Enhanced indexing**

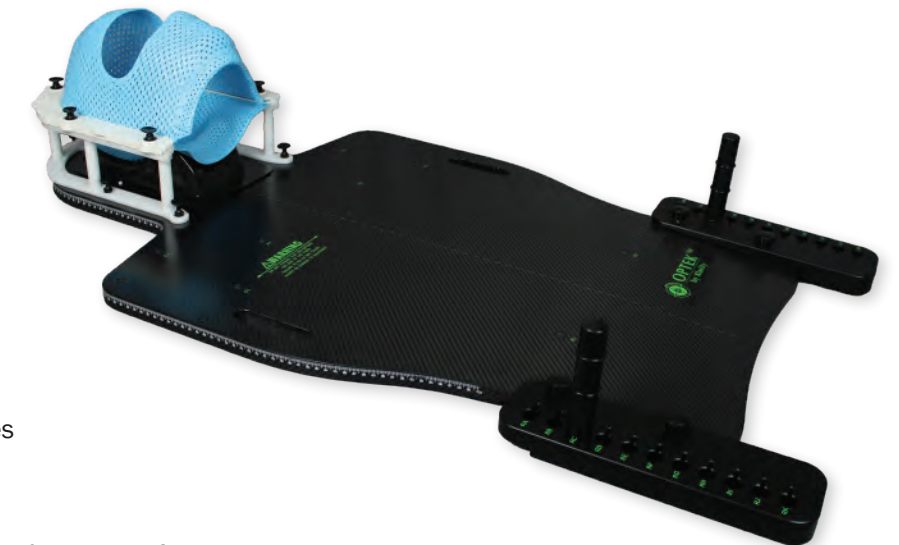


**Easily adjustable handgrips**

# Klarity SRS Adaptor for S-type Baseplates



- Compatible with standard S-type Baseplates
- Easy to attach and detach.
- Compatible with Klarity SRS Masks and the Simple Shim System™



### Klarity SRS Adaptor for S-type Baseplates

**S-20A** Compatible with standard S-type baseplates from Klarity and others

**S-20B** Compatible with Civco S-type baseplates

The Klarity SRS Adaptor is a simple attachment that fits on top of your existing S-type baseplate. The SRS Adaptor clicks into standard S-type mask holes just like a mask. With the Adaptor in place, both bottom and top SRS masks can be easily and securely attached. Mask height can be adjusted between 0-4mm at each pin location using our Simple Shim System™.

Our SRS Adaptor is ideal for clinics that want highest precision SRS treatment but without the price tag and complexity of a complete baseplate system. The Klarity SRS Adaptor is compatible with all standard S-type baseplates and standard Silverman head supports. The Klarity SRS Adaptor is compatible with Klarity SRS Masks.

### COMPATIBLE WITH:



**Optek Overlay**



**Klarity SRS Masks**



**Head Supports**

# Optek™ Demi-Baseplate

The Klarity Optek Demi-Baseplate for the Elekta HexaPOD™ System.



**Klarity Optek™ Demi-Baseplate R630-SHCF**

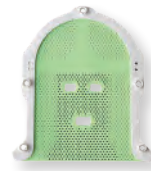
The Optek Demi-Baseplate is specially designed for the Elekta HexaPOD™ evo RT System, and is equally useful for situations requiring S-type masks with a shortened baseplate. It is extremely lightweight and the lower portion gently tapers for patient comfort. The Optek Demi-Baseplate is dual-configured for pediatric and adult S-type masks and is compatible with all S-Type masks.

58cm (Length) x 61cm (Width)



Also available as **R630-OHCF** O-type/U-frame Demi-Baseplate for the Elekta HexaPOD™ evo RT System, compatible with all O-type and U-frame Masks.

COMPATIBLE WITH:



**S-type Head Masks**



**S-type H&S Masks**



**Indexing Bars**



**Head Supports**



**Klarity Cushions™**

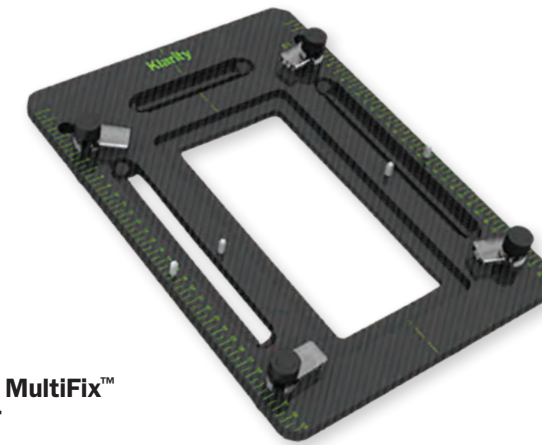


**Vacuum Bags**

# Klarity

# MultiFix™ Head-Only Baseplate

An easy and flexible solution for head placement



**Head Only MultiFix™ R605-HCF**

35.5cm (Length) x 25.5cm (Width)

The Klarity MultiFix™ Head Only Baseplate is a lightweight and simple positioning solution for head placement. Made of strong and durable carbon fiber, the Head Only MultiFix is fully indexable, and compatible with both U-Frame and O-Type head masks. The baseplates can be used with standard Silverman headrests, and options are available for prone positioning. Heat-activated Klarity Cushions™ provide neck support and additional accessories are available, such as vacuum bags, carbon fiber and Silverman head rests, and indexing bars.

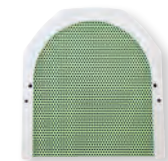


**Prone Head MultiFix™ R605-HPCF**

The baseplate is compatible with the R605-HCF Head Only MultiFix, which can be used with U-frame and O-type Head Masks.

35.8cm (Length) x 25.7cm (Width)

COMPATIBLE WITH:



**U-frame Masks**



**O-type Masks**



**Klarity Cushions™**



**Indexing Bars**



**Head Supports**



# KlarityATHENA™

## SUPINE BREAST SYSTEM

The Klarity Athena Supine Breast System offers flexible solutions for better customized positioning.

The Klarity Athena Supine Breast System is a complete system for supine breast and torso positioning.

The Athena comes with a Wingboard that securely attaches to the baseplate. Both the baseplate and wing board are compatible with all standard S-type masks.



**R610-PDCF**  
Klarity Athena Supine Breast System  
158x41cm

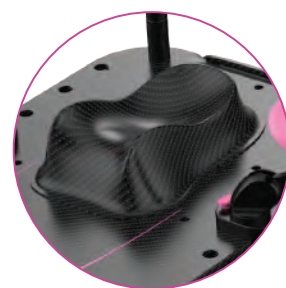
Patients can be positioned with both arms overhead, either with the adjustable T-bar, or on a vacuum bag. The Athena also comes with lower hand grips for a reproducible, one-arm overhead setup.

The baseplate is made of durable carbon fiber and includes a fiducial marker along the center for tracking the spine in relation to the baseplate.

Arm cups and hand grips are also available, along with vacuum bags and thorax masks.

### SPECIFICATIONS

- Elevations at 5°, 10°, 15° and 20°
- Carbon Fiber
- Supports up to 440 lbs
- Equipped with lower hand grips for 1-arm positioning
- Compatible with all standard S-type head masks, speciality thorax masks, as well as vacuum bags.



The Athena Supine Breast System includes a special headrest that can facilitate both medial and lateral head placement.

# KlarityATHENA™

## WITH ARM CUPS AND HAND GRIPS

The Athena Breastboard can also come equipped with adjustable arm cups and hand grips as an alternative to the Wingboard.



**R610-NDCF**  
Carbon Fiber Baseplate with Arm Cups and Hand Grips

# KlarityATHENA™

## WINGBOARD

The Athena Wingboard is also available as a separate baseplate. It attaches easily to the Breastboard and can be used as a standalone device.



**R632-NTCF**  
Carbon Fiber Athena Wingboard

## ALSO AVAILABLE AS MR COMPATIBLE

**R610-PDKF**  
MR Compatible Athena Breastboard and Wingboard



**R632-NTKF**  
MR Compatible Athena Wingboard





## WingSpan™ Baseplate

- Secure arm support
- Lightweight and easily transportable
- Low attenuation



### Klarity WingSpan Baseplate R632-BTCF

The Klarity WingSpan Baseplate features secure arm support for upper body treatment and diagnostic procedures. The WingSpan Baseplate comes with T-Hand Grips. It can be used with standard Silverman head supports. The compatible WingSpan Vacuum Bag allows for secure customizable support. It is comfortable and lightweight, and allows for easy transporting, indexing, and re-positioning, with low attenuation. Optional Handgrip Extenders are also available for more positioning options. The Klarity WingSpan Baseplate can be used alone, or in conjunction with the Klarity Supine Breast System. It is also compatible with the Klarity SBRT System.

56.1cm (Length) x 58cm (Width)

### OPTIONAL COMPONENT:

#### Handgrip Extenders RNH-632

Klarity offers extension handgrips for the Klarity WingSpan™ Baseplate. These rubber grip handles screw into the ends of the existing T-bar for a quick and easy adjustment. They offer an additional level of adaptability for more comfortable arm positioning. Sold as a pair



### ALSO AVAILABLE AS MR COMPATIBLE

#### Klarity MR WingSpan Baseplate R632-BTGF



## Leg Positioner

Easy, ergonomic leg positioning with precise shoulder suppression

- Indexable Carbon Fiber baseplate
- Comfortable and natural leg positioning
- Reproducible shoulder suppression



### Klarity Leg Positioner R634-LCF

The Klarity Leg Positioner is a complete set that includes baseplate, leg support, two elevation blocks, foot cushion, and hand grips. Sturdy foam cushions reduce patient fatigue, and the angle of the feet is fully indexable and adjustable. The acrylic hand grips are a comfortable option for shoulder suppression, and the ball and socket locking feature allows for reproducible tension in 5cm increments. Two elevation blocks are included for height adjustment. The system indexes to any couch top, and can be combined with other immobilization systems for compatible positioning. The Leg Positioner comes as a full system, and the Knee Cushion and elevation blocks can also be indexed directly to the couch top for additional positioning options.

86.4cm (Length) x 44.5cm (Width) x 26.7cm (Max Height)  
Elevation wedges at 10/20/30

### INCLUDED COMPONENTS:

#### Baseplate & Handgrips

#### Knee Cushion



#### Elevation Blocks



#### Foot Holder



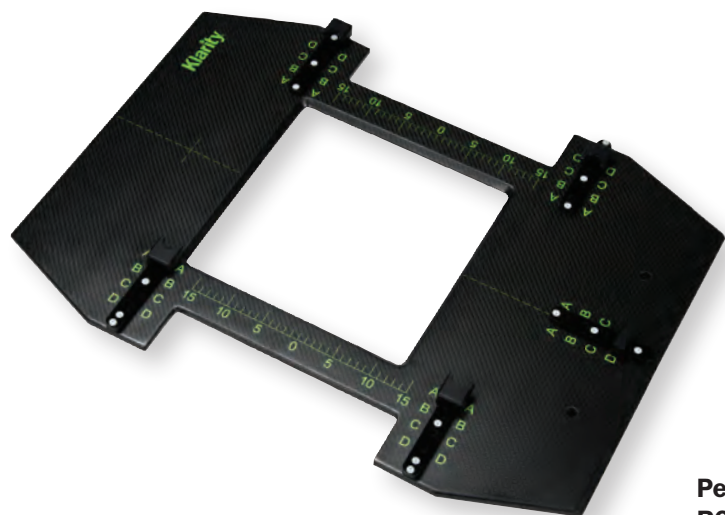
### ALSO AVAILABLE AS MR COMPATIBLE

#### Klarity MR Leg Positioner R634-LGF





## PelvicFix™ Baseplate



**PelvicFix™ Baseplate  
R606-ACF**

### The Klarity PelvicFix Baseplate: for easy, reproducible pelvic positioning

The Klarity PelvicFix Baseplate is a supine pelvic belly board that can be used with large, single thermoplastic sheets for immobilization of the entire abdominal and pelvic region. The baseplate includes a center cutout for easy treatment and an optional indexable thigh spacer. PelvicFix thermoplastic sheets attach to the sides and groin for indexable setup and can be adjusted to fit each patient. The baseplate can also be indexed to the treatment couch.

### INCLUDED COMPONENTS:

**Baseplate**

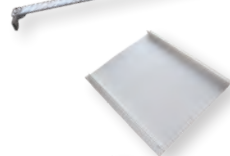
**Thigh spacer  
R606-B-1**

Indexible Thigh Spacer for PelvicFix Baseplate



### COMPATIBLE WITH:

**Indexing Bars**



**PelvicFix Masks**



**Vacuum Bags**



Adjustable to patient size

## MRI Medibord™ Overlay

for Siemens Magnetom Skyra and Aera



### MRI Medibord Overlay for Siemens Magnetom Skyra and Aera

**KSSMR-01 Overlay**

**KME-SSME-AC Torso Coil Holder**

**KME-SSME-IB Indexing Bar**

172.6cm length x 53cm width x 2cm thickness

The MRI Medibord Overlay for Siemens Magnetom Skyra and Aera provides a clean and flat surface for accurate patient positioning. Image fusion with CT images can be undertaken very quickly as table curvature is eliminated, enabling optimum repeatability between imaging and treatment.

The Overlay covers the entire cushioned patient area and is raised 10mm above the top level of the rails. Bright colored spacers locate the overlay perfectly parallel to the table. The width matches most linear accelerator systems, providing broad compatibility.

It's low weight of less than 11lbs and its high resilience make the overlay highly suitable for busy MRI rooms. The head end has a cutout to fit around the head coil unit. It also provides semi-circular recessed indexing points for standard indexing bars and other positioning accessories.

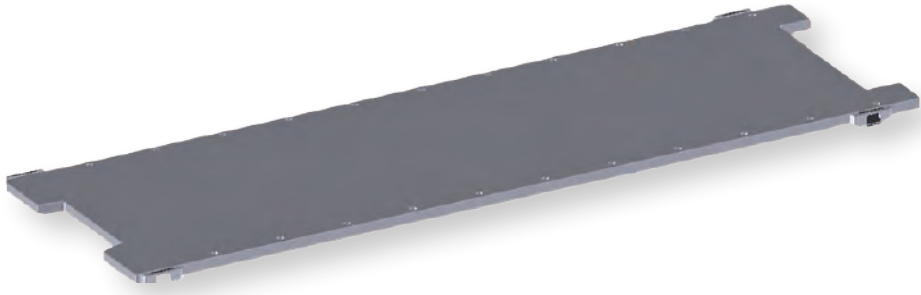
The overlay is extremely rigid with low attenuation.

- 172.6cm length x 53cm width x 2cm thickness
- Compatible with most couch tops
- Full table size with cutout for head coil
- MRi safe, RF compatible, and nonconductive.



# MRI Medibord™ Overlay

for Siemens Magnetom Espree and Excite 1.5T



**MRI Medibord Overlay for Siemens Magnetom Espree and Excite 1.5T**

**KME-SSMR-02** Overlay

**KME-SSMR-AC2** Torso Coil Holder

**KME-SSMR-IB2** Indexing Bar

166.5cm length x 50.9cm width x 2cm thickness

The MRI Medibord for Siemens Magnetom Espree and Excite provides a clean and flat surface for accurate patient positioning, enabling optimum repeatability between imaging and treatment. Image fusion with CT images can be undertaken very quickly as table curvature is eliminated.

The overlay is placed directly on the rail surface after removing cushions from around the main coil, optimizing bore space. The board is accurately located and locked with oblong sliding pins in each corner. The width is slightly larger than the normal patient area but leaves the t-rails accessible for accessories.

It's low weight of less than 11lbs and its high resilience make the overlay highly suitable for busy MRI rooms. The head end has a cutout to fit around the head coil unit. It also provides semi-circular recessed indexing points for standard indexing bars and other positioning accessories.

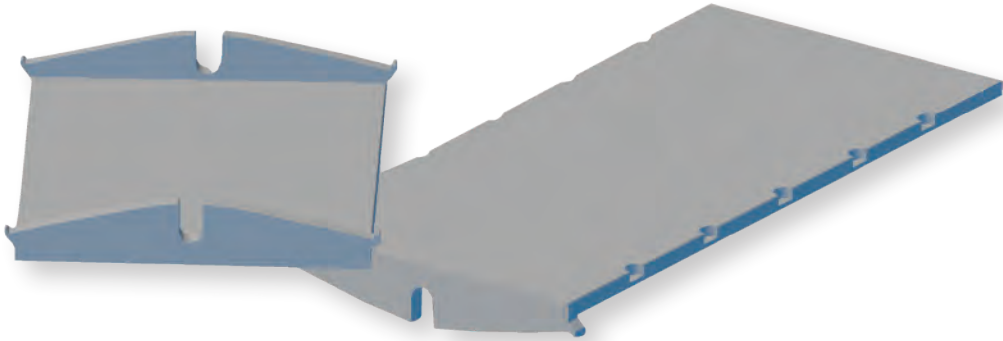
The overlay has low attenuation and is extremely rigid.

- 166.5cm length x 50.9cm width x 2cm thickness
- Interlocks onto existing table with 4 oblong pins
- Works with main coils under board
- T-rail remains fully accessible
- MRi Safe, RF compatible, and nonconductive



# MRI Medibord™ Overlay

for GE Signa Voyager And Pioneer



**MRI Medibord Overlay for GE Signa Voyager And Pioneer**

**KME-GEKU-W1** Overlay

**KME-GEKU-AC** Coil Holder

**KME-GEKU-IB** Indexing Bar

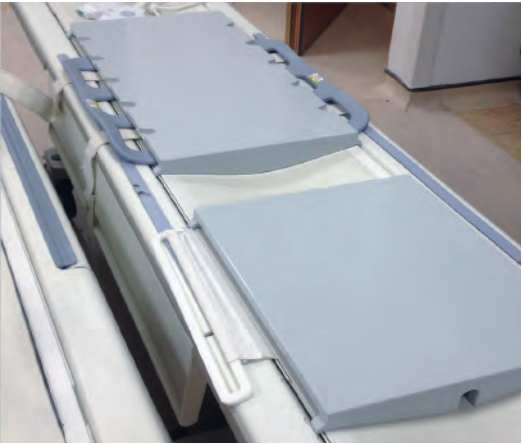
82cm main length / 52cm support length x 39cm width x 2cm thickness

The MRI Medibord Overlay for GE Signa Voyager and Pioneer enables optimum repeatability between imaging and treatment. The flat registration of the patient's position eliminates table curvature and provides a position equivalent to that of a Linac treatment system. Images are taken in the same position as on CT scanner, providing fast and accurate image fusion.

The overlay is located on the top of the existing table and locks over the edge with supports that follow the curvature of the table. This solution is designed so that the torso coil fits under the main infill board and the support board can be located on either side of the main board. The main boards has standard indexing and locks onto the existing table with no interference with the mail coils.

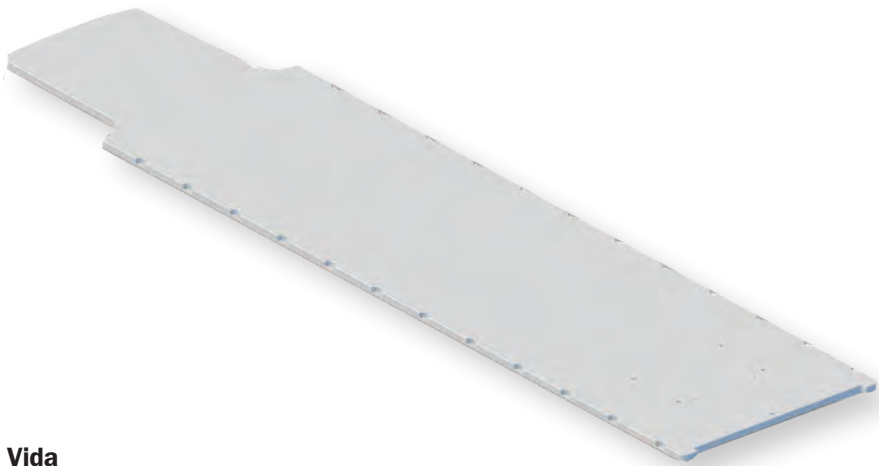
It is extremely rigid with low attenuation.

- 82cm main length / 52cm support length x 39cm width x 2cm thickness
- 2 part overlay set
- Compatible with positioning accessories
- MRi Safe, RT Compatible, and nonconductive



# MRI Medibord™ Overlay

for Siemens Magnetom Vida



**MRI Medibord Overlay for Siemens Magnetom Vida**

**KME-SVMR-WI** Overlay  
**KME-SVMR-AC** Coil Holder  
**KME-SVMR-IB** Indexing Bar  
 202.8cm length x 52cm width x 2cm thickness

The MRI Medibord for Siemens Magnetom Vida provides a clean and flat surface for accurate patient positioning to enable optimum repeatability between imaging and treatment. Image fusion with CT images can happen more quickly as table curvature is eliminated.

The overlay fits on the couch top and is narrow enough for free use of the rails on the side of the couch while maintaining standard indexing dimensions. A low weight of under 5 kg and high resilience make the overlay highly suitable for busy MRI rooms.

The head end has a cut-out to fit around the head coil unit. It is compatible with standard indexing bars and other positioning devices. It can be indexed to any existing table, and features an integrated locator block. It is full table sized, with a cutout for the head coil. A coil holder for Body Coil 16 is available in various sizes.

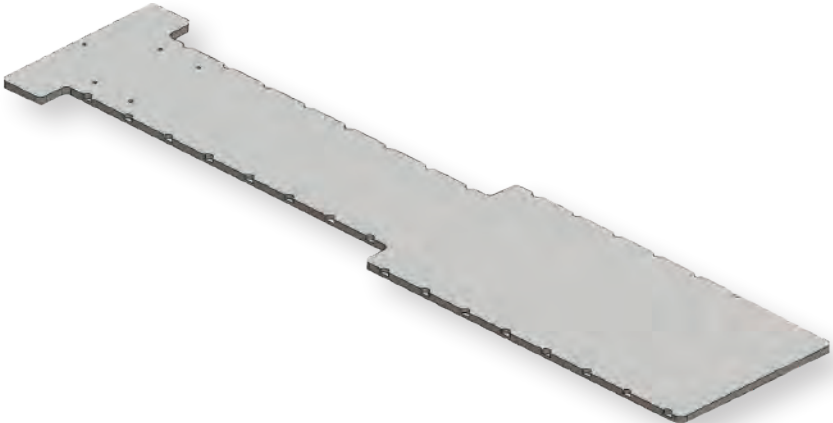
It has low attenuation and is highly rigid.

- 202.8cm length x 52cm width x 2cm thickness
- MRi Safe
- RF Compatible
- Nonconductive



# MRI Medibord™ Overlay

for Philips Achieva



**MRI Medibord Overlay for Philips Achieva**

**KME-PHAC-WI** Overlay  
**KME-PHAC-AC** Coil Holder  
**KME-PHAC-IB** Indexing Bar  
 236cm length x 50.3cm width x 2cm thickness

Klarity offers the Medibord MRI Overlay for Philips Achieva systems.

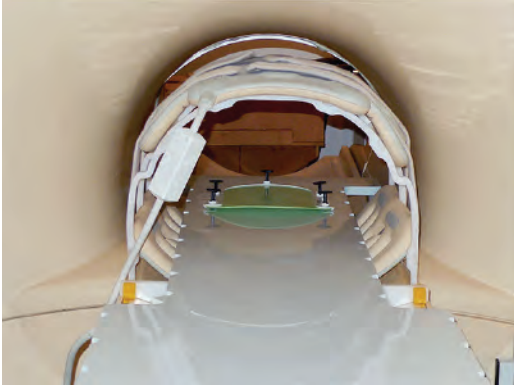
The Overlay provides a clean and flat surface for accurate patient positioning and indexability to enable optimum repeatability between imaging and treatment. The overlay covers the entire patient area and is raised 25mm above the top level of the rails to create clearance for the coil cables. Fixed spacers locate the overlay perfectly to the table. The scanning zone has a reduced width to allow for the coil to be wrapped around patient and overlay.

It's low weight of less than 11lbs and its high resilience make this overlay highly suitable for rapid changeovers during interdepartmental use of the MRI system. The overlay can be removed within minutes, minimizing downtime.

The Medibord Overlay for Philips Achieva is designed to work with indexing bars as well as other positioning systems and tools. The coil holder is suitable for the TorsoXL coil and uses the full space of the 60cm bore to allow optimal use of space.

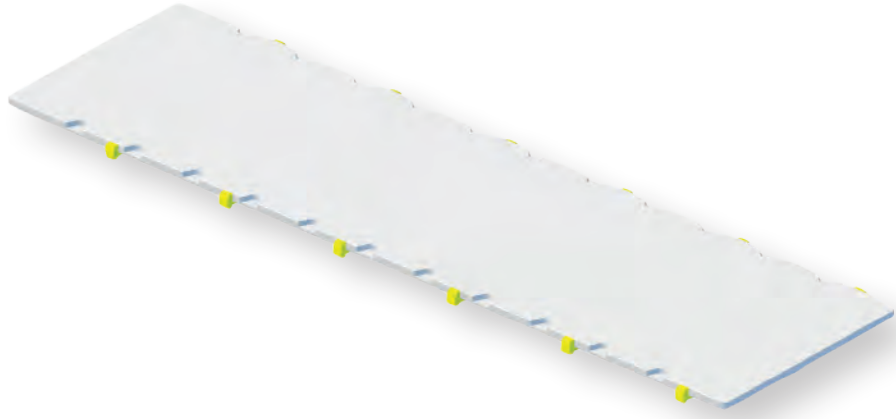
The Overlay has low attenuation and is extremely rigid with support beams for increased stability.

- 236cm length x 50.3cm width x 2cm thickness
- Compatible with all couch tops
- Raised to fit main coils
- MRi Safe, RF Compatible and Nonconductive



# MRI Medibord™ Overlay

For Philips Ingenia



**MRI Medibord Overlay for Philips Ingenia**

**KME-PHIN-WI** Overlay

**KME-PHIN-AC** Coil Holder

**KME-PHIN-IB** Indexing Bar

200cm length x 50.3cm width x 2cm thickness

Klarity offers the MRI Medibord™ Overlay for Philips Ingenia System. Solutions for 60cm and 70cm bore are available.

The Overlay is the ideal solution for flat patient positioning on a Philips Ingenia MRI with 70cm bore. It provides a clean and flat surface for accurate patient positioning and indexation to enable optimum repeatability between imaging and treatment. The Overlay covers the entire patient area. It is flush on the top level of the rail without clearance to allow maximum bore usage.

It's low weight of less than 11lbs and its high resilience make it highly suitable for rapid changeovers during interdepartmental use of the MRI system. The overlay can be removed within minutes, minimizing downtime.

The Overlay is designed to work with indexing bars as well as other positioning systems and tools. A coil holder is available for the TorsoXL anterior coil. Wing mounts are also available for head and neck masks as well as indexing bars.

It is extremely rigid with low attenuation.

- 210.7cm length x 53cm width x 2cm thickness
- Compatible with all couch tops
- MRi Safe
- RF Compatible
- Nonconductive



# MRI Medibord™ Overlay

For Siemens Biograph MMR



**PET-MRI Medibord Overlay for Siemens Biograph MMR**

**KME-SBMR-WI** Overlay

**KME-SBMR-HN** Head & Neck Coil Holder

**KME-SBMR-AB** Standard Torso Coil Holder

**KME-SBMR-ABS** Small Torso Coil Holder

**KME-SBMR-ABL** Large Torso Coil Holder

**KME-SBMR-ABX** Extra Large Torso Coil Holder

**KME-SBMR-IB** Indexing Bar

200 cm length x 50.3 cm width x 2cm thickness

Klarity offers the PET-MRI Medibord™ Overlay for the Siemens Biograph mMR System. The Overlay provides a clean, flat surface for accurate and easily reproducible patient positioning. The overlay covers the entire patient area and is raised 10 mm above the rails to create clearance for the main coil. Brightly colored spacers locate the overlay perfectly parallel to the couch.

Its lightweight construction(> 5 kg) and high resilience make the Overlay suitable for interdepartmental use. The overlay can also be removed quickly, minimizing downtime during rapid changeovers.

The Overlay is designed to work with indexing bars as well as other positioning systems and tools. It is extremely rigid with low attenuation.

- 200 cm length x 50.3 cm width x 2cm thickness
- Compatible with all couch tops
- MRi Safe
- RF Compatible



# Masks

|                                  |           |
|----------------------------------|-----------|
| <b>Proton Masks</b>              | <b>30</b> |
| <b>SRS Masks</b>                 | <b>32</b> |
| <b>S-type Masks</b>              | <b>34</b> |
| <b>U-frame Masks</b>             | <b>38</b> |
| <b>E-type Masks</b>              | <b>41</b> |
| <b>Stereotactic Masks</b>        | <b>42</b> |
| <b>Dynamic Mask Sets</b>         | <b>43</b> |
| <b>O-type Masks</b>              | <b>44</b> |
| <b>P-type Masks</b>              | <b>46</b> |
| <b>V-type Masks</b>              | <b>48</b> |
| <b>Breast &amp; Pelvic Masks</b> | <b>49</b> |



# Thermoplastic Masks



## Klarity Thermoplastic Masks

To achieve the most successful treatment outcomes in radiation therapy, it is critical that radiation beams hit the tumor in the same place every time, targeting the affected area while sparing as many healthy cells as possible. Masks and other immobilization devices aid therapists in ensuring that patients return to the same position for every treatment.

Klarity offers four types of thermoplastic: Klarity White™, Klarity Green®, Klarity LiteGreen™, and Klarity Blue™. Each type of thermoplastic has been specifically designed for optimal fixation with each frame-type and is available in varying thicknesses, sizes, and perforation patterns. Our thermoplastic is stronger, less-sticky, and has less shrinkage than other thermoplastic masks.

Klarity Masks are easy to prepare and can be heated with either an oven (at 165°F/73°C) or a water bath (at 160°F/70°C). Heating times vary by product and heating method. When the thermoplastic mask material is thoroughly warm, it becomes pliable and is ready for molding on the patient. Once the thermoplastic cools, it becomes rigid and extremely strong.

### Klarity White™

Available for S-type, U-frame, P-type, and Stereotactic masks

Klarity White™ is our original thermoplastic and continues to be the standard for much of the world today. Klarity White™ has a fast set-up for a strong thermoplastic mask. Klarity White™ is less sticky than other standard thermoplastics.

**Strong**  
**Standard Shrinkage**

Molding Time:  
**45-60 seconds**

Cooling Time:  
**8-10 minutes**

### Klarity LiteGreen™

Available for O-type and E-type masks

Klarity LiteGreen™ is our preferred thermoplastic for 3- and 5-point systems. It is non-stick, so the edges can be pulled apart if they touch, and it drapes nicely for an incredibly easy molding experience. Klarity LiteGreen™ is only available in 2.4mm with a microperforation pattern, which makes this mask stronger than other reinforced thermoplastic.

**Stronger**  
**Less Shrinkage**

Molding Time:  
**1-2 minutes**

Cooling Time:  
**8-10 minutes**

### Klarity Green®

Available for S-type, U-frame, O-type, P-type, V-type, E-type, Proton Therapy, and Stereotactic masks

Klarity Green® is our best selling, signature thermoplastic and is our recommended thermoplastic for most applications. It has less shrinkage and is completely non-stick, so edges can be pulled apart if they connect. Klarity Green® features a slightly longer working-time (30 extra seconds). This means therapists don't have to rush and can create a more carefully molded mask, which allows for a more comfortable patient experience.

**Stronger**  
**Much Less Shrinkage**

Molding Time:  
**2-3 minutes**

Cooling Time:  
**10-12 minutes**

### Klarity Blue™

Available for SRS, S-type, U-frame, and Proton Therapy masks

Klarity Blue™ is our strongest thermoplastic, and is ideal for high-precision applications. It also has the least amount of shrinkage. Our blue masks are the most rigid of any mask, with an extremely high resilience once molded and cooled. Klarity Blue™ also sets up quickly, making this ideal for patients who need limited immobilization time, and the blue material drapes gently for smooth, highly accurate mask making.

**Strongest**  
**Least Shrinkage**

Molding Time:  
**45-60 seconds**

Cooling Time:  
**3-6 minutes**





# Proton Therapy Masks

## Klarity Proton-K Masks Compatible with Klarity® Promise™ Proton System



**RG-PH-2436C**  
Green Proton-K Head Mask  
with 36% perforation  
2.4mm

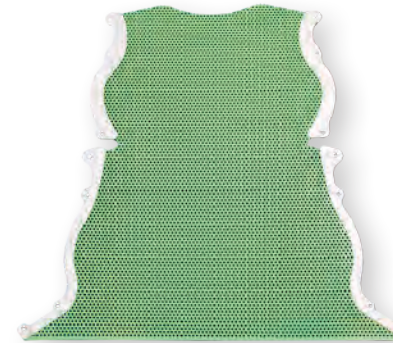
**RG-PH-3242C**  
Green Proton-K Head Mask  
with 42% perforation  
3.2mm



**RG-PS-2436C**  
Green Proton-K  
Head & Shoulder Mask  
with 12% perforation  
2.4mm

**RG-PS-3242C**  
Green Proton-K  
Head & Shoulder Mask  
with 42% perforation  
3.2mm

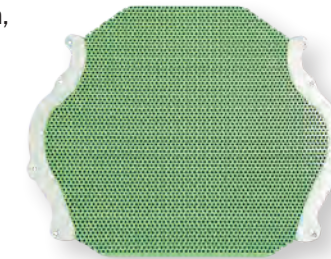
## Klarity Proton-B Masks Compatible with Qfix® BoS™ System



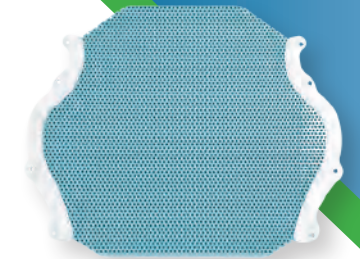
**RG-BSL-3242**  
Green Large Proton-B  
Head & Shoulder Mask  
with 42% perforation,  
3.2 mm,  
48 cm wide



**RB-BSL-3210**  
Blue Large Proton-B  
Head & Shoulder Mask  
with 10% perforation,  
3.2 mm,  
48 cm wide



**RG-BHM-3242**  
Green Medium Proton-B  
Head Mask  
with 42% perforation,  
3.2 mm,  
34 cm wide



**RB-BHM-3210**  
Blue Medium Proton -B  
Head Mask  
with 10% perforation,  
3.2 mm,  
34 cm wide

Klarity is a leader  
in patient immobilization  
for proton therapy

Learn more at  
[www.klaritymedical.com/  
proton-therapy](http://www.klaritymedical.com/proton-therapy)

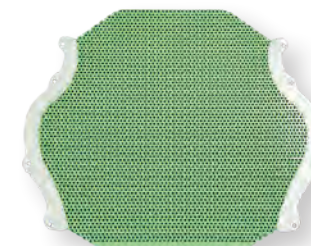
## Klarity Proton-C Masks Compatible with Civco® ProForm™ System



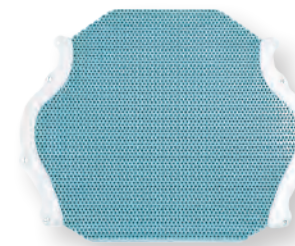
**RG461CH2**  
LiteGreen C-type Proton  
Therapy Head Mask  
with 12% perforation,  
2.4mm



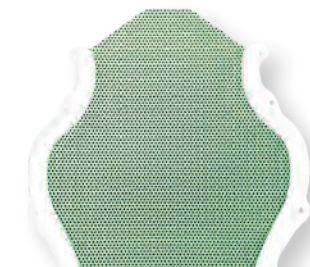
**RG461C2**  
LiteGreen C-type Proton  
Therapy Head & Shoulder Mask  
with 12% perforation,  
2.4mm



**RG-BHS-3242**  
Green Small Proton-B  
Head Mask  
with 42% perforation, 3.2 mm,  
28.5 cm wide



**RB-BHS-3210**  
Blue Small Proton-B  
Head Mask  
with 10% perforation, 3.2 mm, 28.5  
cm wide



**RG-BHS-A2436**  
Green Pediatric Proton-B  
Head Mask  
with 35% perforation, 2.4mm  
24 cm wide



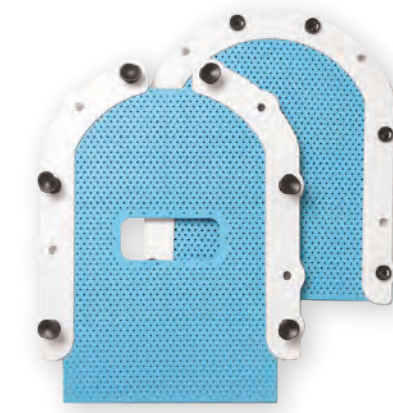
# SRS Masks

Compatible with the Qfix® Encompass™ SRS Immobilization System

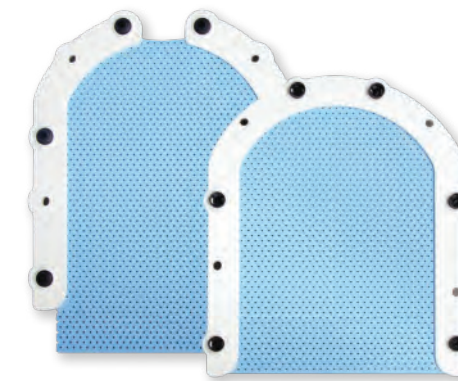
## Don't get stuck with your SRS Mask!

Klarity SRS Masks offer an extra strong thermoplastic mask set with removable shims at each pin location to maximize treatment accuracy and patient comfort.

Klarity SRS Masks are specifically designed to help achieve precise treatment accuracy for Stereotactic Radiosurgery. The two-piece mask system allows for both anterior and posterior support, while providing a 0-4mm range of adjustment at each pin location. Our new Klarity Blue™ thermoplastic creates a stronger, more rigid mask with increased stability for the most precise treatment setup.



**S-2000**  
Blue SRS Head Mask Set  
Includes Posterior Mask,  
Extended OpenFace Anterior Mask,  
and Simple Shim System  
3.2mm  
Each mask set sold individually



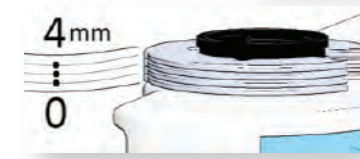
**S-2001**  
Blue SRS Head Mask Set  
Includes Posterior Mask, Extended  
Anterior Mask, and Simple Shim  
System  
3.2mm  
Each mask set sold individually

## Klarity® | SIMPLE SHIM SYSTEM™

Included with each Klarity SRS Mask

Klarity SRS Masks are an extra-strong thermoplastic mask set that works with the Klarity Simple Shim System™.

The Simple Shim System™ uses a familiar shimming concept to shim up or down in 1mm increments at each individual pin location. Shims can be added or removed to adjust the high between the posterior and anterior mask from 0mm (no shims) up to 4mm (4shims). The result is an intuitive shimming technique for secure, customizable treatment.



## OPTIONAL COMPONENT

### R-QST-5

#### Single Shim System

We've created an even easier shimming option with our Single Shim System. Our 1mm shims can be placed on the rear mask to start (we recommend beginning with 2 shims so you can shim up or down between 0-4mm). The Single Shim creates an even height across all pin locations. Should you need to adjust the shim height at any individual pin location, you can swap out the single shim for individual shims instead (Simple Shim System™).



Find our instructional videos online at [klaritymedical.com/instructional-videos](http://klaritymedical.com/instructional-videos)

# S-type Masks

## Head

Klarity S-type Masks are available in Klarity White™, Klarity Green®, and Klarity Blue™, in both standard and reinforced perforation patterns.



**RG461SHT**  
Green S-Type Head Mask  
42% perforation  
3.2mm

**RG460SHT**  
Green S-Type Head Mask  
36% perforation  
2.4mm



**RG460-4SHT**  
Green S-type Head Mask  
with AccuPerf™  
2.4 mm

**RG461-4SHT**  
Green S-type Head Mask  
with AccuPerf™  
3.2 mm



**RB461-3210SHT**  
Blue S-Type Head Mask  
10% perforation  
3.2mm



**R461SHT**  
White S-type Head Mask  
with 42% perforation  
3.2 mm



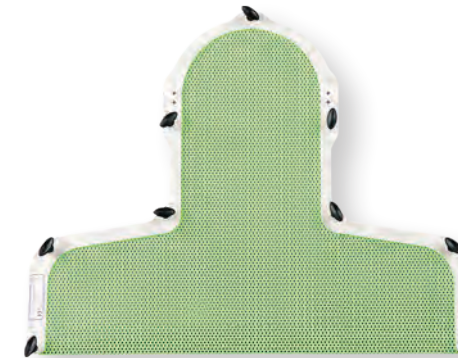
**R461-4SHT**  
White S-Type Head Mask  
AccuPerf™  
3.2mm



**RG461-5SHT**  
Green S-type  
Extended Head Mask  
with AccuPerf™  
3.2 mm

# S-type Masks

## Head & Shoulder



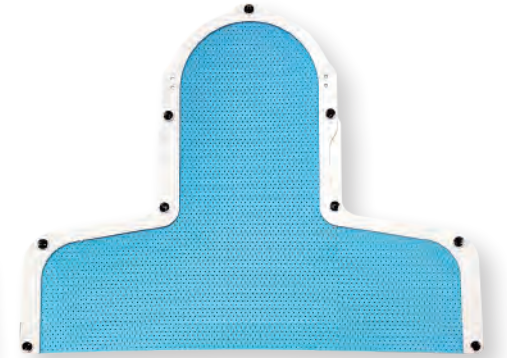
**RG460ST**  
Green S-Type  
Head & Shoulder Mask  
36% perforation  
2.4mm

**RG461ST**  
Green S-Type  
Head & Shoulder Mask  
42% perforation  
3.2mm



**RG460-4ST**  
Green S-type  
Head & Shoulder Mask  
with AccuPerf™  
2.4 mm

**RG461-4ST**  
Green S-type  
Head & Shoulder Mask  
with AccuPerf™  
3.2 mm



**RB461-3210ST**  
Blue S-Type  
Head & Shoulder Mask  
10% perforation  
3.2mm



**R461ST**  
White S-type  
Head & Shoulder Mask  
with 42% perforation  
3.2 mm



**R461-4ST**  
White S-Type  
Head & Shoulder Mask  
with AccuPerf™  
3.2mm



**RG460SC**  
Green S-type Pediatric  
Head & Shoulder Mask  
with 36% perforation  
2.4 mm  
(for Optek board Only)

**RG461SC**  
Green S-type Pediatric  
Head & Shoulder Mask  
with 42% perforation  
3.2 mm  
(for Optek board Only)

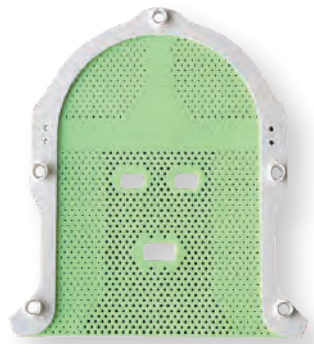


Klarity® S-type masks fit all S-type baseplates from Klarity and other manufacturers. See pages 6-29 for Klarity baseplates that are compatible with S-type masks.



# S-type Masks

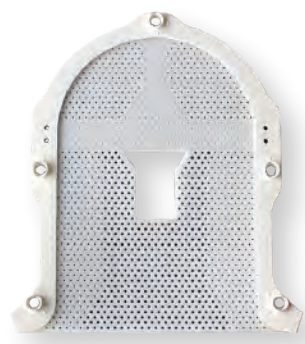
## Open Face Head



**RG461-8SHEM**  
Green S-type  
Open Eye & Mouth  
Head Mask  
with AccuPerf™, 3.2 mm



**RB461-6SHEM**  
Blue S-Type  
Open Eye & Mouth  
Head Mask  
with AccuPerf™, 3.2mm



**R461-8SHTF**  
White S-type  
OpenFace  
Head Mask  
with AccuPerf™, 3.2 mm  
visionrt



**RB461-6SHTF**  
Blue S-Type  
OpenFace  
Extended Head Mask  
with AccuPerf™, 3.2mm  
visionrt



**RG461-8SHTF**  
Green S-Type Open Face  
Head Mask  
AccuPerf™  
3.2mm  
visionrt



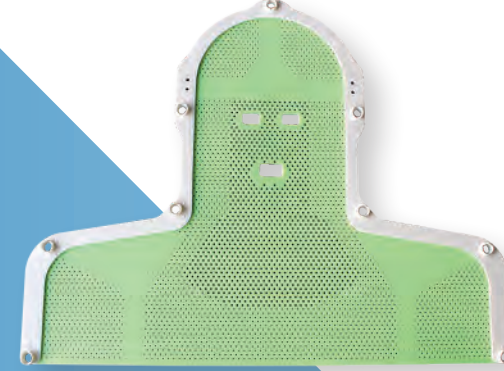
*S-type OpenFace Head Mask*



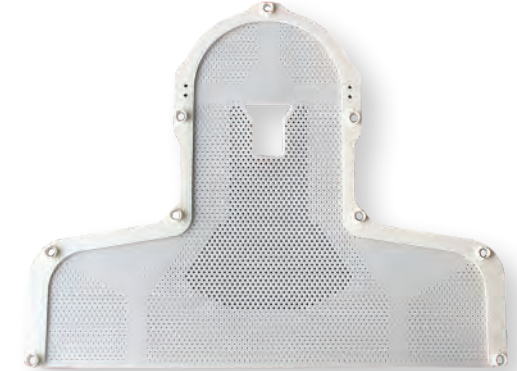
*S-type Open Eye & Mouth Head Mask*

# S-type Masks

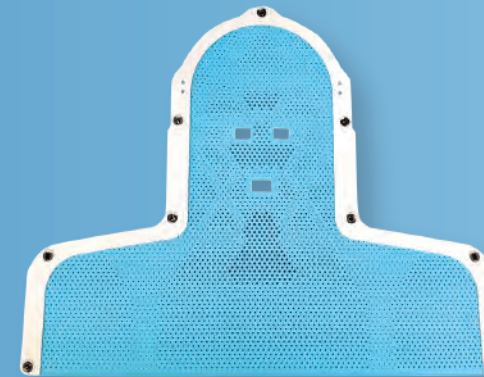
## Open Face Head & Shoulder



**RG461-8STEM**  
Green S-type  
Open Eye & Mouth  
Head & Shoulder Mask  
with AccuPerf™, 3.2 mm



**R461-8STF**  
White S-type  
OpenFace  
Head & Shoulder Mask  
with AccuPerf™, 3.2 mm  
visionrt



**RB461-6STEM**  
Blue S-Type  
Open Eye & Mouth  
Head & Shoulder Mask  
with AccuPerf™ 3.2mm



**RG461-8STF**  
Green S-Type Open Face  
Head & Shoulder Mask  
AccuPerf™  
3.2mm  
visionrt



**RB461-6STF**  
Blue S-Type  
OpenFace  
Head & Shoulder Mask  
with AccuPerf™, 3.2mm  
visionrt



# U-frame Masks

## ProfileFrame™

- Wider facial area than all other U-frame masks
- Strong, narrow frame
- Available in White, Green, and Blue thermoplastic
- Reinforced frame will not wiggle or warp



**R420W**  
White ProfileFrame™ Head Mask  
with 36% perforation, 2.4 mm

**R430W**  
White ProfileFrame™ Head Mask  
with 42% perforation, 3.2 mm



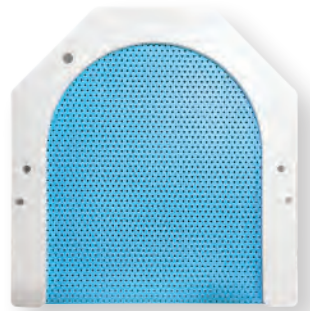
**RG420W**  
Green ProfileFrame™ Head Mask  
with 36% perforation, 2.4 mm

**RG430W**  
Green ProfileFrame™ Head Mask  
with 42% perforation, 3.2 mm



**RG420-1W**  
Green ProfileFrame™ Head Mask  
with AccuPerf™, 2.4 mm

**RG430-1W**  
Green ProfileFrame™ Head Mask  
with AccuPerf™, 3.2 mm



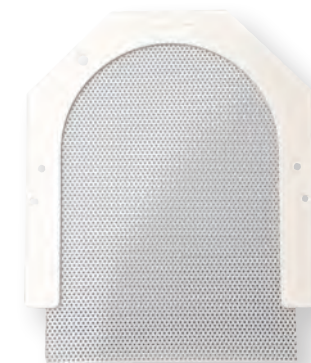
**RB430W-3210**  
Blue ProfileFrame™ Head Mask  
10% perforation, 3.2mm



Expanded U-frame  
width for lower mass  
and less attenuation.

# U-frame Masks

## ProfileFrame™



**R421W**  
White ProfileFrame™  
Extended Head Mask  
with 36% perforation, 2.4 mm

**R431W**  
White ProfileFrame™  
Extended Head Mask  
with 42% perforation, 3.2 mm



**RG421W**  
Green ProfileFrame™  
Extended Head Mask  
with 36% perforation, 2.4 mm

**RG431W**  
Green ProfileFrame™  
Extended Head Mask  
with 42% perforation, 3.2 mm



**RB431W-3210**  
Blue ProfileFrame™  
Extended Head Mask  
with 10% perforation, 3.2mm



**RG464-1W**  
Green ProfileFrame™  
Extended Head Mask  
with AccuPerf™, 3.2 mm

Also available with  
Open Face cutout upon  
request. Use ID RG464-81W



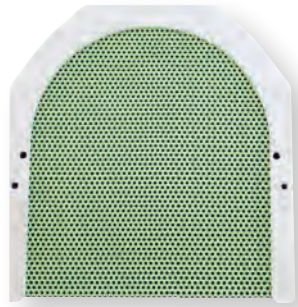
Klarity ProfileFrame™ Masks fit all standard U-frame baseplates from Klarity and other manufacturers.



# U-frame Masks

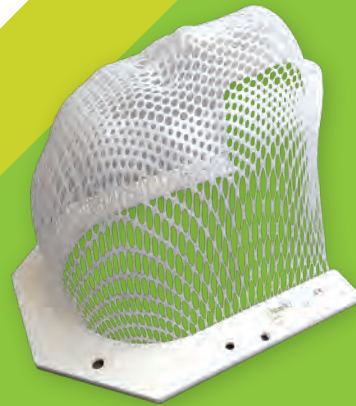
Klarity ContourFrame™ and EzeFrame™ are Klarity's most popular U-frame masks. Both feature molded thermoplastic with smooth surfaces and an exclusive round-edge neckline. ContourFrame™ masks also have a reinforced nose area for extra support and a perforation pattern for easy breathing.

## U-Max™ WideFace Masks



**RG420E**  
Green U-Max™ WideFace Head Mask with 36% perforation, 2.4 mm

**RG430E**  
Green U-Max™ WideFace Head Mask with 42% perforation, 3.2 mm



### ContourFrame™

**R450U**  
White ContourFrame™ Head Mask with contour perforation, 2.4 mm

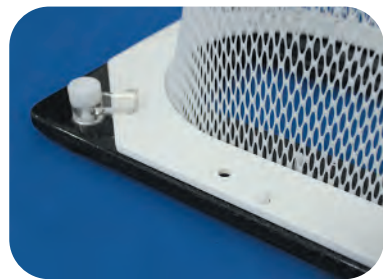
- Perforated patch pattern for easier breathing and greater facial comfort
- Comfortable rounded neckline



### EzeFrame™

**R430UC**  
White EzeFrame™ Head Mask with 42% perforation, 3.2 mm

- Extremely strong and comfortable
- Smooth, molded surface
- Comfortable, rounded neckline



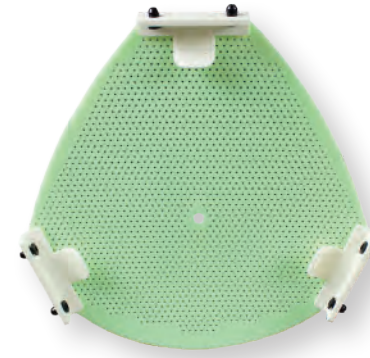
*Klarity U-frame masks fit all standard U-frame baseplates from Klarity and other manufacturers. See pages 6-31 for Klarity baseplates that are compatible with U-frame Masks.*



# E-type Masks

Klarity LiteGreen™ masks for the Elekta Gamma Knife Icon™ System, as well as masks for Elekta's Fraxion™ and HeadSTEP™ Systems.

## Masks for the Elekta Leksell Gamma Knife® Icon™ System

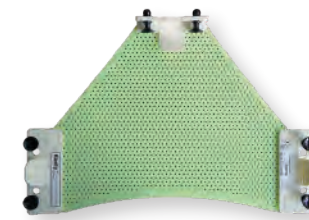


**RLG-ESH3-2412C**  
LiteGreen™ E-type Icon™ Head Mask with 12% perforation, 2.4 mm

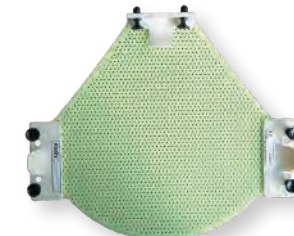


**Compatible with:**  
Klarity Cushions™ (page 60)

## Masks for Elekta Fraxion™



**RLG-ESH1-2412C\***  
LiteGreen™ E-type Fraxion™ Head Mask with 12% perforation, 2.4 mm



**RLG-ESH2-2412C\***  
LiteGreen™ E-type Fraxion™ Rounded Head Mask with 12% perforation, 2.4 mm

## Masks for Elekta HeadSTEP™



**RLG-ELH-2412CN\***  
Green E-type HeadSTEP™ Head Mask with 22% perforation, 2.0 mm



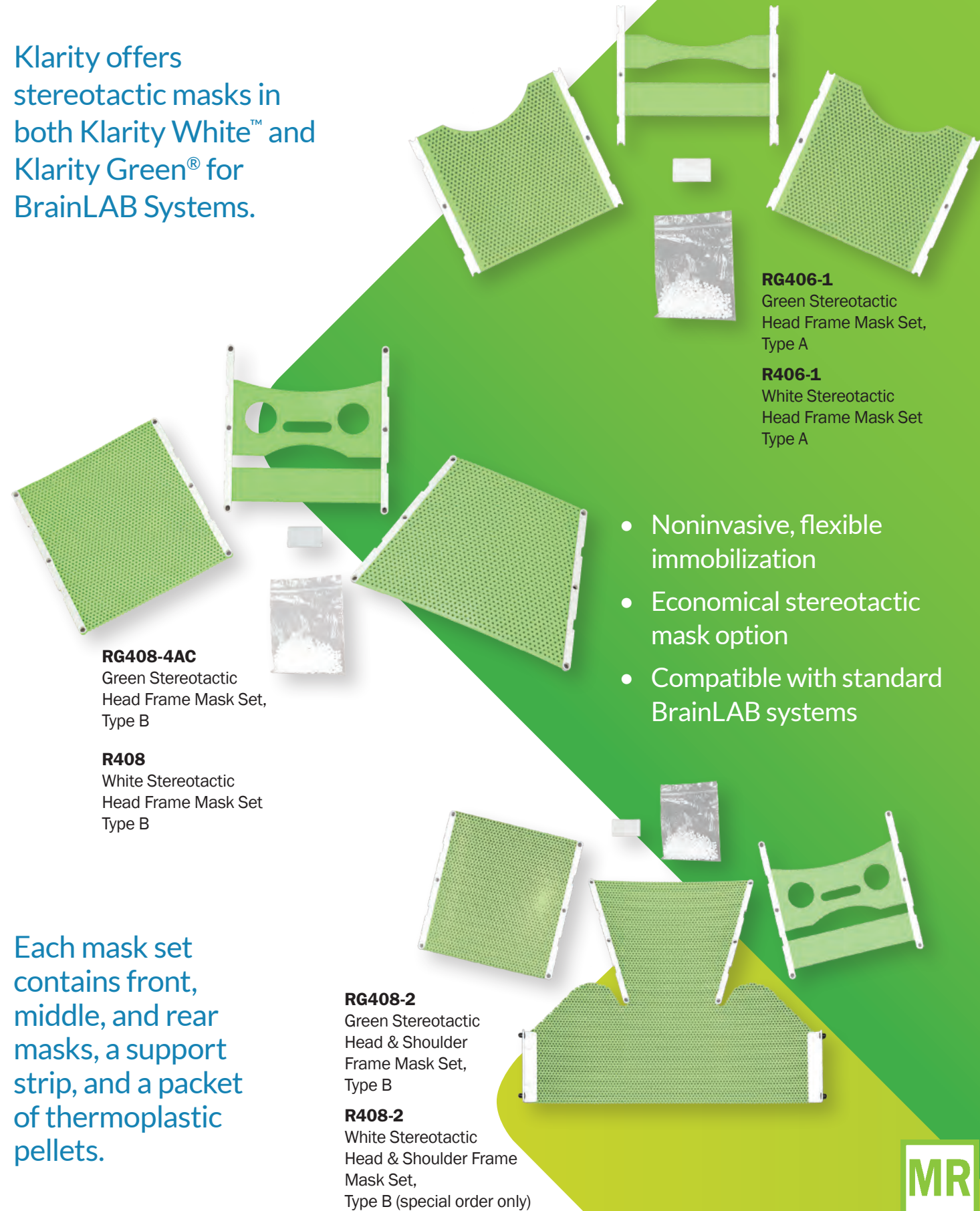
**RLG-ELS-2412CN\***  
Green E-type HeadSTEP™ Head & Shoulder Mask with 22% perforation, 2.0 mm

\* Special order item. Please allow extra time for delivery.



# Stereotactic Masks

Klarity offers stereotactic masks in both Klarity White™ and Klarity Green® for BrainLAB Systems.



**RG406-1**  
Green Stereotactic Head Frame Mask Set, Type A

**R406-1**  
White Stereotactic Head Frame Mask Set, Type A

**RG408-4AC**  
Green Stereotactic Head Frame Mask Set, Type B

**R408**  
White Stereotactic Head Frame Mask Set, Type B

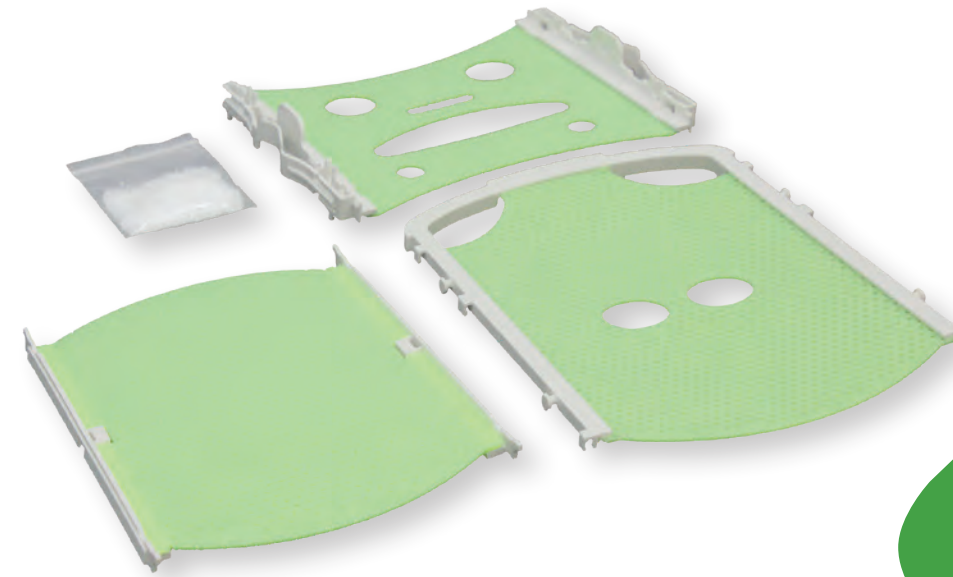
**RG408-2**  
Green Stereotactic Head & Shoulder Frame Mask Set, Type B

**R408-2**  
White Stereotactic Head & Shoulder Frame Mask Set, Type B (special order only)

- Noninvasive, flexible immobilization
- Economical stereotactic mask option
- Compatible with standard BrainLAB systems

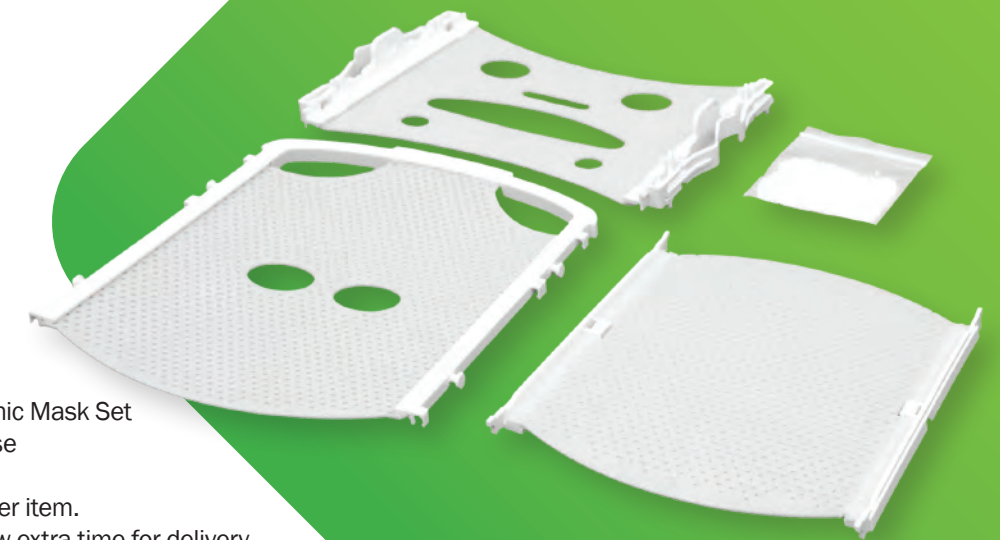


# Dynamic Mask Sets



**RG408A-1\***  
Green Dynamic Mask Set  
5 masks/case

\*Special order item.  
Please allow extra time for delivery



**R408A-1\***  
White Dynamic Mask Set  
5 masks/case

\*Special order item.  
Please allow extra time for delivery

# O-type Masks

## Klarity® O-type 3-point Head Masks



**RDG105-24A**  
Green O-type 3-point Head Mask (with nose hole) with AccuPerf™, 2.4 mm

**RDG105-32A**  
Green O-type 3-point Head Mask (with nose hole) with AccuPerf™, 3.2 mm

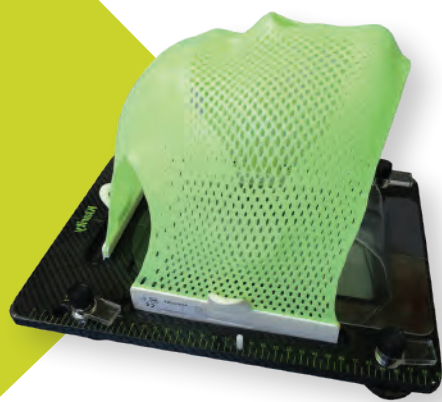


**RDLG105-2412C**  
LiteGreen™ O-type 3-point Head Mask (with nose hole) with 12% perforation, 2.4 mm



**RDLG105-24AF**  
LiteGreen™ O-type 3-point OpenFace Head Mask with AccuPerf™, 2.4 mm  
visionrt

LiteGreen™ O-type Masks are made from a thinner material that is stronger than the thickest mask.



**RDG107-32A**  
Green O-type 3-point Rounded Head Mask (with nose hole) with AccuPerf™, 3.2 mm

**RDG107-24A**  
Green O-Type 3-Point Head Mask with Rounded Neckline (with nosehole) AccuPerf™ 2.4mm



**RDLG107-2412C**  
LiteGreen™ O-type 3-point Rounded Head Mask (with nose hole) with 12% perforation, 2.4 mm

# O-type Masks

## Klarity® O-type 5-point Head Masks



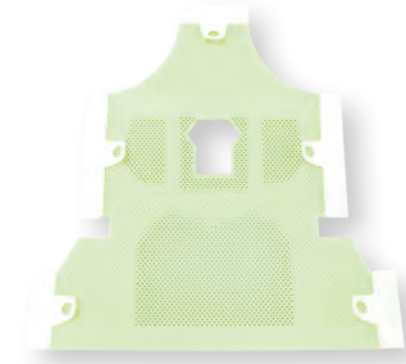
**RDG207-24A**  
Green O-type 5-point Head & Shoulder Mask (with nose hole) with AccuPerf™, 2.4 mm

**RDG207-32A**  
Green O-type 5-point Head & Shoulder Mask (with nose hole) with AccuPerf™, 3.2 mm



**RDLG207-8A24**  
LiteGreen O-Type 5-Point Head & Shoulder Mask (with nosehole) 2.4mm

**RDLG207-8A**  
LiteGreen O-Type 5-Point Head & Shoulder Mask (with nosehole) 3.2mm



**RDLG207-24AF**  
LiteGreen™ O-type 5-point OpenFace Head & Shoulder Mask with AccuPerf™, 2.4 mm  
visionrt

## O-type Pediatric Masks



**RDLG104-2412C**  
LiteGreen™ O-type 3-point Pediatric Head Mask (with nose hole) with 12% perforation, 2.4 mm



**RDLG204-2412C**  
LiteGreen™ O-type 5-point Pediatric Head & Shoulder Mask (with nose hole) with 12% perforation, 2.4 mm

## Testimonial:

"The extra time to mold the masks on the patient makes for a better fitting and more comfortable mask."

Steve Rohrer, B.S. RT(T), OSU James Cancer Hospital, Columbus, Ohio





# P-type Masks

## Klarity® P-type Head Masks



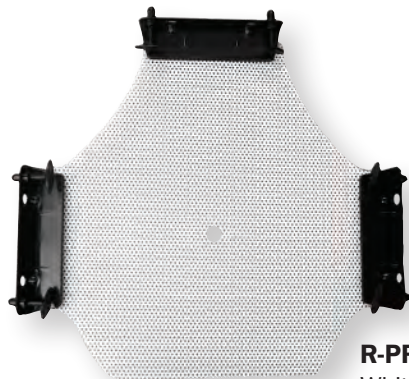
**RG-PRT3-24A**  
Green P-type 3-point Head Mask  
(with nose hole) with AccuPerf™, 2.4 mm



**R-PRT3-2415**  
White P-type 3-point  
Head Mask (with nose hole)  
with 15% perforation, 2.4 mm  
(special order only)



**R-PRT31-2415**  
White P-type 3-point Rounded  
Head Mask (with nose hole)  
with 15% perforation, 2.4 mm  
(special order only)



**R-PRT44-2415**  
White P-type 3-point Extended  
Head Mask (with nose hole)  
with 15% perforation, 2.4 mm  
(special order only)

*Klarity® P-type masks  
fit all PosiFix-type  
baseplates from  
Klarity and Civco.*

“Klarity masks  
keep their form  
and have far  
less shrinkage  
than other masks.”

- Steve Rohrer, B.S. RT(T), OSU James  
Cancer Hospital, Columbus, Ohio



# P-type Masks

## Klarity® P-type Head & Shoulder Masks



**R-PRT5-2415**  
White P-type 5-point  
Head & Shoulder Mask  
(with nose hole) with 15% perforation,  
2.4 mm  
(special order only)



**RG-PRT5-24A**  
Green P-type 5-point  
Head & Shoulder Mask  
(with nose hole) with AccuPerf™,  
2.4 mm



**R-PRTL-2415**  
White P-type 4-point  
Head & Shoulder Mask (with nose hole)  
with 15% perforation, 2.4 mm  
(special order only)

## Klarity® P-type 2-point Head Masks



**R-PRT2-2415**  
White P-type 2-point  
Head Mask (with nose hole)  
with 15% perforation, 2.4 mm  
(special order only)

## Testimonial:

“Klarity supplies  
high-quality service,  
with a constant spirit  
of research and  
development.”

*Martial SCHOEN, Chef de Produit  
Orthopédie & Rééducation,  
Laboratoire Adhesia, Rennes, France*



# V-type Masks

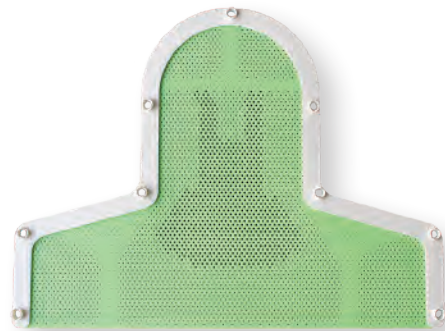
Klarity Green™ V-type masks compatible with Versa-Bionix systems.

## Klarity® V-type Head Masks



**RG460-4VHT**  
Green V-type Head Mask with AccuPerf™, 2.4 mm

## Klarity® V-type Head & Shoulder Masks



**RG460-4VT**  
Green V-type Head & Shoulder Mask with AccuPerf™, 2.4 mm

Compatible with Bionix VersaBoard™ Systems

## Testimonial:

"Klarity Green™ masks are very easy to mold and ensure a rigid and stable positioning for a precise treatment."

Radiation Oncology Department,  
General Hospital, Lucerne,  
Switzerland



# Breast & Pelvic Masks

## Breast & Torso Masks

for the Klarity Supine Breast System  
R611-5SDCF



**R91-2436M**  
White Pelvic Mask with 36% perforation, 2.4 mm, 46x48 cm (special order only)

**R91-3242M**  
White Pelvic Mask with 42% perforation, 3.2 mm, 46x48 cm (special order only)

**R91-2400M**  
White Pelvic Mask solid, 2.4 mm, 46x48 cm (special order only)

## PelvicFix™ Masks

For the Klarity Pelvic Fix System R606-ACF and the Civco HipFix System

**R902-1A**  
PelvicFix™ Mask insert for reusable frame, solid, 2.4 mm, 46 x 56 cm (special order only)

**R902-3A**  
PelvicFix™ Mask insert for reusable frame with 42% perforation, 3.2 mm, 46 x 56 cm

**R902-7A**  
PelvicFix™ Mask insert for reusable frame, solid, 3.2 mm, 46 x 56 cm (special order only)

## HipFix Masks

**RLG902-32CB**  
LiteGreen HipFix Mask with reinforced perforation, 3.2 mm



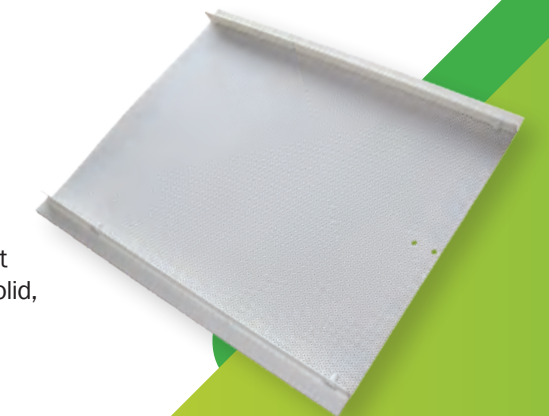
## O-type Breast and Pelvic Masks

**RD305-3242C**  
White 2-Point O-Type Breast Mask, 42% perforation, 3.2mm 25 x 40.8 cm

**RD301-3242**  
White 2-Point O-Type Breast Mask, 42% perforation, 3.2mm 34 x 23 cm

**RD901-2436**  
White 4-Point O-Type Pelvic Mask, 36% perforation, 2.4mm 46.3 x 48 cm

**RD901-3242**  
White 4-Point O-Type Pelvic Mask, 42% perforation, 3.2mm 46.3 x 48 cm





# Klarity Cushions™

Klarity Cushions™

Head & Shoulder Klarity Cushions™

Accessories

# Klarity<sup>®</sup> Cushions<sup>™</sup>

Advanced indexing tools  
for highly accurate,  
customized support.



Klarity Cushions<sup>™</sup> customized head molds. They are an advanced indexing tool that provides secure, personalized head and neck support for patients. These cushions are made from low-density thermoplastic-based materials that become soft and pliable when heated in an oven or water bath. After heating, Klarity Cushions<sup>™</sup> offer warm and comforting support that has a calming effect on most patients.

Once cool, Klarity Cushions<sup>™</sup> become firm and rigid, ensuring excellent reproducibility and precise placement for highly accurate treatment. Klarity Cushions<sup>™</sup> can be used with Silverman headrests, and they also fit under a thermoplastic mask to create 360-degree custom support and immobilization. Klarity Cushions<sup>™</sup> with a Neck Insert can be used without a Silverman headrest, enabling optimal cervical spine support and immobilization.

The inner cushion contains a proprietary mix of high-quality, lightweight filling surrounded by a thin layer of thermoplastic. The soft and stretchable outer covering is made of simple nylon fabric. All Klarity Cushions<sup>™</sup> are 100% nontoxic, with minimal shrinkage and no odor. Klarity Cushions<sup>™</sup> are one-per-patient, but they can be reheated and reformed if needed.

- Working time of 2-4 minutes
- Fully sets in 5-7 minutes
- 100% nontoxic and odorless
- Can be reheated and reshaped
- Increased control of cervical spine area with low attenuation
- Comforting and calming for patients
- Preferred by therapists and clinics worldwide



# Klarity<sup>®</sup> U-Cushions<sup>™</sup>

A Universal  
Klarity  
Cushion<sup>™</sup>



**R550-U**  
23 x 30 cm

A small design innovation changes everything. Klarity's U-Cushion<sup>™</sup> provides all the benefits of the traditional Klarity Cushion<sup>™</sup> material in a design that is even easier to use. The curved top allows the therapist to contour the cushion to the patient with minimal adjustment. This eliminates the need to tuck away corners and enables the mask frame to come down evenly and securely. The U-Cushion<sup>™</sup> indexes to both the crown of the head and the Silverman headrest, reducing pitch and providing even greater precision.

# Klarity<sup>®</sup> U-Cushions<sup>™</sup>



**R550-U4**  
20 x 25 cm

The R550-U4 Klarity Cushion<sup>™</sup> features a slimmer profile with a comfortable rounded shape. It is comparable in size to our standard R550-M cushion. Ideal for smaller patients.



**R550-U5**  
23 x 25 cm

The R550-U5 Klarity Cushion<sup>™</sup> is similar to the U4 cushion in that it is ideal for smaller patients. The U5 cushion has a slightly wider profile for additional support around the neck.



**R550-U6**  
23 x 38 cm  
with additional fill

The R550-U6 cushion is our longest U-cushion. It is ideal for situations where additional contouring and support is needed at both the crown of the head and under the cervical spine.



**R550-U2**  
23 x 30 cm

The R550-U2 has the same rounded top, but with extra fill in the neck. This allows the cushion to be indexed without a silverman. It can also be used to provide custom pitch, and works well with deeper head cups that require thicker cushioning under the neck.



**R550-U3**  
23 x 35 cm

The R550-U3 Klarity Cushion<sup>™</sup> has the same rounded shape and easy moldability of our standard U-Cushion<sup>™</sup>, but in a slightly larger size. The additional length of this Klarity Cushion<sup>™</sup> is excellent for deeper headrests or for customized positioning.



**R550-U7**  
23 x 35 cm  
with double fill

The R550-U7 Klarity Cushion<sup>™</sup> is our "double-stuffed" cushion. It is similar to the U3 cushion, but with a double layer inside for additional thickness. It is ideal for situations where extra thickness and cushioning is desired.



**R550-U8**  
23 x 38 cm  
with triple fill

Imagine laying on a soft, warm pillow, and that's what the R550-U8 cushion is like. It's our largest cushion yet, with triple stuffing for extreme cushioning and support



**R550-U9**  
23 x 38 cm

The R550-U9 is our longest cushion yet, for maximum coverage around both the crown and cervical spine. It offers the ultimate in comprehensive support while maintaining easy moldability with standard thickness.



Best-selling standard size!



**R550-M**  
20 x 25 cm

Our standard Klarity Cushion™. Designed to be used with a Silverman headrest, the R550-M cushion is our most popular size and is best suited for standard head and neck support.



**R550-M1**  
23 x 30 cm

This Klarity Cushion™ has a slightly wider base of support for greater support under the head and neck as well as improved indexing. The M1 works well on the Q headrest or a standard Silverman headrest.



**R550-M2**  
20 x 25 cm  
with double fill

The R550-M2 is the same shape and size as the R550-M standard Klarity Cushion™, but with double the amount of filling for a more substantial cushion. .



**R550-M3**  
23 x 35 cm

The M3 Klarity Cushion™ is slightly wider and longer than other standard Klarity Cushions™, making it ideal for use with deeper headrests. The M3 works well in situations requiring customized tilt and pitch of the head and neck.



**R550-S**  
15 x 20 cm

A smaller version of the R550-M, this small cushion is appropriate for patients with smaller head sizes, including pediatric and adolescent patients.



**R550-L**  
20 x 40 cm

The R550-L is a long, versatile Klarity Cushion™ that offers multiple types of custom support. It can be used to mold around the arm and wrist as well as other extremities that require customized positioning. This cushion can also be used under the head and neck with a standard Silverman headrest, providing a long line of support that extends from the C-spine to the crown of the head.

**R550-L2**  
40 x 60 cm

Our largest Klarity Cushion™ adapts well in situations requiring a large support base. The cushion can be molded around the extremities, or it can be used for full-torso support or extra pelvic cushioning.



# Head & Shoulder Klarity Cushions™

## Comprehensive support for head, neck, and shoulder stabilization

Head & Shoulder Klarity Cushions™ are an ultra-precise method for stereotactic, cranial, C-spine, and shoulder immobilization where sub-millimeter margins are required. Head & Shoulder Klarity Cushions™ create cranial support with additional shoulder suppression. They are also available with additional fill in the neck for custom immobilization without the need for a headrest. Multiple sizes and dimensions are available for various degrees of cranial support.

Additional tools are available for easy molding, including the Shell Mold, for holding the cushion in place as it cools, and cleanable Velcro straps, offering therapists assistance in forming the cushion to the patient's contours. Once the Klarity Cushion™ cools, a thermoplastic mask can be placed on top, creating a fully encompassing, rigid support system.



**R550-T**  
46 x 41 cm

The Head & Shoulder Klarity Cushion™ provides the same head and neck support as the standard Klarity Cushion™, but it also extends down to sit underneath the scapula and wraps up over the shoulders for custom shoulder suppression. The R550-T fits over a Silverman headrest, and for optimal reproducibility, it should be used with a Head & Shoulder Mask.



**R550-T2**  
46 x 41 cm

With extra fill in the neck area, the R550-T2 is ideal for situations requiring customized tilt and pitch of the head and neck, or when a large amount of build-up is needed under the C-spine. The T2 is designed for use without a Silverman headrest and indexes directly to the overlay or baseplate.



**R550-TL**  
46 x 46 cm

The R550-TL provides the same head and neck support as the R550-T, but extends further under the patient's back. This cushion sits underneath the scapula and wraps over the top of the shoulders. For optimal reproducibility, it should be used with a Head & Shoulder Mask.



**R550-T2L**  
46 x 46 cm

The R550-T2L offers even more customized support. The cushion sits under the scapula and wraps up over the shoulders to create more fully encompassing support around the neck and shoulders. The T2L contains extra fill in the neck and indexes directly to the overlay or baseplate.

# Head & Shoulder Klarity Cushions™



**R550-H1**  
26 x 35 cm

The H1 is a fully encompassing head-only cushion that creates a shell around the head. This cushion is designed for use with a Silverman headrest, and functions best when molded with the Klarity Shell Mold. The H1 is ideal for situations that require full, 360-degree circumferential immobilization, where support is needed up to the crown of the head.

**R550-HS2L**  
46 x 50 cm

The HS2L is Klarity's most comprehensive Klarity Cushion™. Designed for use without a Silverman headrest, this cushion indexes directly to the baseplate or overlay. The extra fill in the neck allows for custom positioning for precise tilt and pitch. The sides of the HS2L can wrap up and around the sides and crown of the head, creating a 360-degree shell around the patient. For optimal reproducibility, it should be used with a Head & Shoulder Mask.

## Pediatric Klarity Cushion™



**R550-P**  
28 x 36 cm

The R550-P is a smaller-sized Head & Shoulder Klarity Cushion™ that offers customized support and immobilization for pediatric patients. For optimal reproducibility, it should be used with a Head & Shoulder Mask.



# Specialty Klarity Cushions™

## Klarity Cushion™ for Leksell Gamma Knife® Icon™ System



**R550-CEL**  
17.5 x 35 cm

Designed for Elekta's Gamma Knife® Icon™ system, the Icon Klarity Cushion™ should be used with an Icon mask to provide precise fixation and comfortable support.

## Klarity Cushions™ for Proton Therapy



**R550-BOS3**  
48 x 63 cm

The R550-BOS3 is a precise silhouette to provide comfortable, customized support for the head, neck, and C-spine. The BOS3 can be used with both Head-Only Masks and Head & Shoulder Masks.



**R550-BOS**  
46 x 45 cm

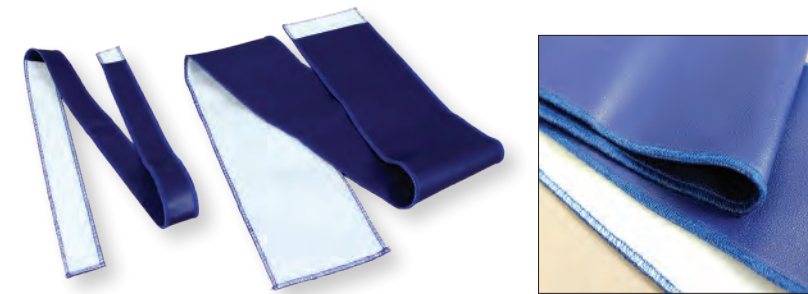
The R550-BOS features an extended head portion to fit into the head cup, and the extra fill in the neck area allows for customized support around the C-spine. The cushion wraps up over the shoulders to provide comfortable but firm shoulder suppression. When used with a Head & Shoulder Mask, this cushion enables indexing for the whole chest and shoulder girdle.



**R550-CM1**  
15 x 25 cm  
with neck insert

The R550-CM1 Klarity Cushion™ features an ultra-slim profile that nestles into the head cup of proton therapy baseplates. The CM1 has additional fill in the neck for contoured support under the cervical spine.

# Tools and accessories for Klarity Cushions™



**R565-605C**  
Cleanable Strap Set

The cleanable strap set is a positioning aid that makes it easier for a single therapist to mold a Klarity Cushion™. The straps are made from a comfortable and stretchable material that is easy to clean. Velcro strips attach to the Klarity Cushion™ and sides of the couch, providing comfortable but firm suppression during setup.

Straps are used for setup only and should be removed before treatment.

Each strap comes with the following:

- Two 2 x 60 in straps
- Two 6 x 60 in straps
- Two adhesive tabs for the couch



Klarity Shell Mold (3 sizes)

- R560-S** S-type and U-frame
- R560-O** O-type
- R560-M** Klarity MultiFix™ Baseplate

The Klarity Shell Mold is a reusable frame for molding the H1 and HS2L Klarity Cushions™. Once the cushion cools within the frame, the Shell Mold should be removed before using a mask. Includes three head sizes for each frame type.





# Vacuum Bags

# Klarity<sup>®</sup> Vacuum Bags

The Klarity Vacuum Bag: a stronger, more durable vacuum bag that's fully MR Safe

Klarity Vacuum bags are a stronger, more reliable vacuum bag. A durable and non-permeable nylon shell prevents punctures and tears. All bags are completely air-tight and leak-proof, filled with low density polystyrene mini-spheres. A corner grommet allows for easy storage.

Our vacuum bags are designed for long-term multi-patient use. The nylon shell can be easily cleaned between patient use. The durable design means that bags need to be replaced less often. Our vacuum bags come with replaceable valves and adaptors are available to make any vacuum pump compatible with Klarity Vacuum Bags.



**R7407-30C**  
Vacuum Bag for Pelvic Support  
(25 x 25 cm, center cut)  
30-liter fill  
100 x 70 cm



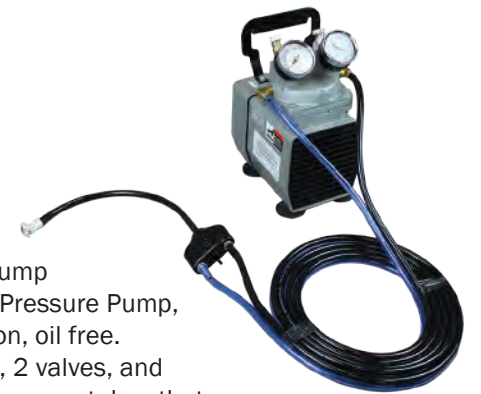
**R7505-30C**  
Vacuum Bag for Body Support  
30-liter fill  
100 x 80 cm

## Vacuum Bag Accessories



**KSC-3**  
Klarity Storage Cart  
45.7 x 121.9 x 182.8 cm

Metal storage cart for convenient vacuum bag storage. The cart can hold up to 227 kg (500 lbs) and comes on locking wheels. The wire shelves are adjustable (no tools required), and the cart comes with 3 shelves for customized storage. Vacuum bag grommets fit easily on movable metal rungs.



**KVP-500**  
Klarity Vacuum Pump  
Electric Vacuum/Pressure Pump,  
110V dual function, oil free.  
Includes AirSwitch, 2 valves, and  
2 self-retracting vacuum tubes that  
are 3 m (10 ft) in length.



**KVP-100**  
Klarity AirSwitch™ handheld vacuum pump control switch  
The simple, one-handed operation provides quick-change airflow with the flick of a switch. The lightweight switch has three settings—In, Hold, and Out—for precise bag adjustments. Comes with a durable two-channel hose. The AirSwitch™ attaches to your existing vacuum pump and is available for all vacuum bag types and connector valves. Please specify current pump type when ordering.

## Adaptors

Klarity Vacuum Bags are automatically equipped with valves for use with Klarity or Civco Vacuum Pumps. Please inquire if additional Vacuum Pump adaptors are needed.

**R7800-NAD**  
Adaptor for Bionix™  
Vacuum Pump  
Allows Bionix™ Pump  
to be used with  
Klarity Vacuum Bags

**R7800-QAD**  
Adaptor for QFix™  
Vacuum Pump  
Allows QFix™ Pump to  
be used with Klarity  
Vacuum Bags



# Vacuum Bags

Klarity Vacuum Bags are available in the following sizes and specifications. All bags can be ordered with an indexing bar. Please specify valve type when requesting a quote. Inquire directly for custom sizes.



**R7100-01C**  
Vacuum Bag for Head Support, 1-liter fill, 20 x 25 cm



**R7101-03C**  
Vacuum Bag for Head Support, 3-liter fill, 30 x 40 cm



**R7106-2.25C**  
Vacuum Bag for Head Support, 2.25-liter fill, 25 x 50 cm



**R7301-15C**  
Vacuum Bag for Breast Support, 15-liter fill, 50 x 70 cm



**R7540-30C**  
Vacuum Bag for Body Support, 30-liter fill, 150 x 75 cm



**R7540-60C**  
Vacuum Bag for Body Support, 60-liter fill, 150 x 75 cm



**R7512-55C**  
Vacuum Bag for Body Support, 55-liter fill, 150 x 80 cm



**R7509-75C**  
Vacuum Bag for Body Support, 75-liter fill, 150 x 100 cm



**R7401-20C**  
Vacuum Bag for Body Support, 20-liter fill, 70 x 70 cm



**R7506-40C**  
Vacuum Bag for Body Support, 40-liter fill, 100 x 100 cm



**RC7504-17.5C**  
Vacuum Bag for Body Support, 17.5-liter fill, 100 x 70 cm



**R7504-30C**  
Vacuum Bag for Body Support, 30-liter fill, 100 x 70 cm



**R7202-09C**  
Vacuum Bag for Head & Shoulder Support, 9-liter fill, 67 x 62 cm



**R7200-05C**  
Vacuum Bag for Head & Shoulder Support, 5-liter fill, 50 x 70 cm



**RC7221-25BC**  
Vacuum Bag for Body Support with indexing bar, 25-liter fill, 138 x 87 cm



**R7661-20C**  
Vacuum Bag for Upper Body Support 20 Liter Fill 58.5x90 cm



**R7504-35C**  
Vacuum Bag for Body Support, 35-liter fill, 100 x 70 cm



**R7504-35BC**  
Vacuum Bag for Body Support with indexing bar, 35-liter fill, 100 x 70 cm



**R7505-30C**  
Vacuum Bag for Body Support, 30-liter fill, 100 x 80 cm



**R7536-30C**  
Vacuum Bag for Body Support, 30-liter fill, 120 x 70 cm



**R7407-30C**  
Vacuum Bag for Pelvic Support (25 x 25 cm Center Cut), 30-liter fill, 100 x 70 cm



**R7626-20C**  
WingSpan™ Vacuum Bag, 20-liter fill, 104 x 53 cm



**R7644-32.5BC**  
SBRT Vacuum Bag for Body Support with indexing bar, 32.5-liter fill, 136.5 x 90 cm



**R7524-120C**  
Vacuum Bag for Body Support, 120-liter fill, 200 x 100 cm



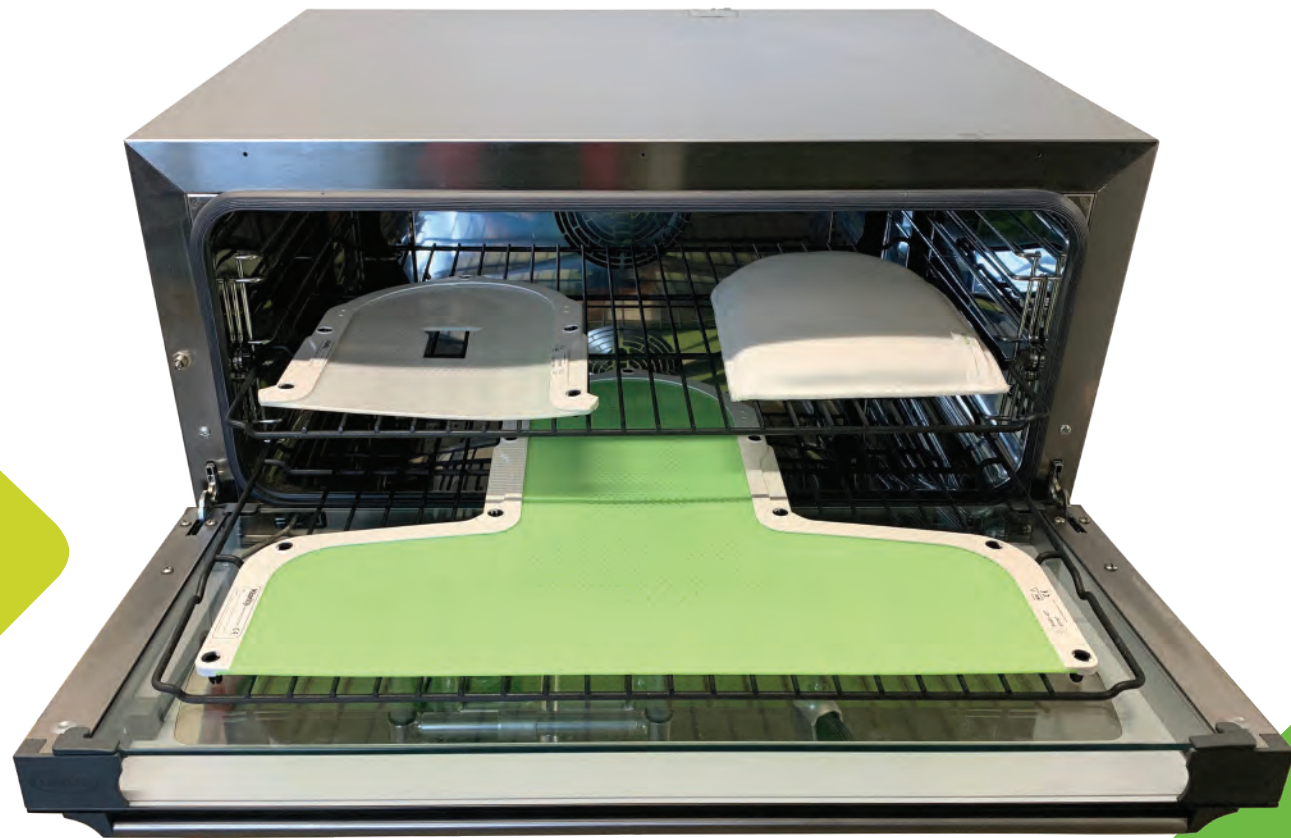
**R7131-5NLTC**  
SBRT Vacuum Bag for Knee Bridge 28 x 80 cm 5 Liter Fill



**Ovens**

# Klarity<sup>®</sup> Ovens

The Klarity AirFlow™ Oven: efficient dry-heat technology to optimize workflow and maximize safety



## AirFlow™

### KEL-1400

Klarity AirFlow™ Oven (110V)

Outer dimensions: 31.5w x 34.5d x 16h in (80w x 88d x 41h cm)

Inner dimensions: 25w x 19d x 10.5h in (64w x 48d x 27h cm)

Weight: 40 kg (88 lbs)

The Klarity AirFlow™ Oven is the most efficient oven available. The AirFlow™ heats to 165 °F in under ten minutes and prepares masks in 3–5 minutes. Double racks allow for multiple thermoplastic devices to be heated at the same time.

- Warms up quickly
- Nonstick surface
- Easy to clean

## Klarity Ovens

Klarity ovens harness the power of dry heat to provide an efficient, easy-to-use method for preparing all standard masks, Klarity Cushions™, and other thermoplastic devices. Klarity ovens are efficient and effective. Not only do they transform therapist's workflow, but they also ensure a safer, more comfortable patient experience.

The Klarity AirFlow™ Oven is the fastest oven available today. Upon startup, the AirFlow™ automatically heats to 165°F in under ten minutes. The simple digital interface also allows the user to adjust the temperature manually. The oven's high-powered fan makes it possible to prepare masks in as little as 3–5 minutes. Klarity Cushions™ take approximately 10–12 minutes to prepare.

With its double racks, the AirFlow™ is designed to fit multiple thermoplastic devices at once, including head & shoulder masks. The racks have a nonstick Teflon coating, which means that thermoplastic devices can be placed on them directly for no-fuss preparation. The AirFlow™ is also equipped with a double-pane glass door that makes it easy to determine when devices are fully heated. When they come out of the oven, devices are completely dry and ready to be formed.

In addition to its impressive functionality, the AirFlow™ is easy to clean; the oven interior can be wiped down thoroughly in minutes. The oven does not require any auxiliary equipment, so it saves space in simulation and treatment rooms. When placed on Klarity's stainless steel AirFlow™ cart, the oven also becomes mobile.

The Klarity AirFlow™ Oven offers the best in dry-heat technology for the preparation of thermoplastics.

# Klarity<sup>®</sup> Ovens



**KEL-C100**  
Stainless Steel AirFlow™ Oven Cart

The Klarity Stainless Steel AirFlow™ Oven Cart is a sturdy and flexible option for oven placement. The stainless steel cart is easy to assemble, secure, and durable. It supports the Klarity AirFlow™ Oven and comes with an additional shelf for storage.

Weight: 22.6 kg (50 lbs)  
Outer dimensions: 91.5w x 76d x 71h cm  
(36w x 30d x 28h in)



**KEL-1200RK**  
Supplemental Teflon-coated oven rack for Klarity AirFlow™ Ovens



**KEL-113**  
AirFlow™ CounterMount

The AirFlow™ CounterMount is a space-saving countertop extender for the AirFlow oven. The two HDPE plastic bars attach to your existing countertop and extend off the edge to support the oven feet. The AirFlow™ CounterMount comes with a template for installation, all hardware, and two lengths of bolts for different countertop thicknesses.

Each mount is 7.6w x 66d x 2.5h cm  
(3w x 26d x 1h in)

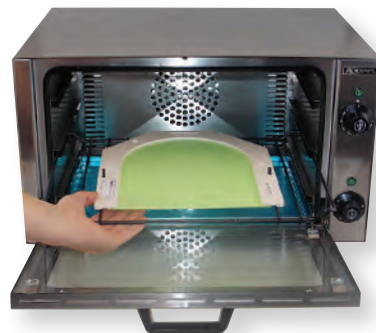


## Mini

**KCOQ-1750W**  
Klarity Mini Oven

The Klarity Mini Oven is a convenient option for head-only masks. The Mini Oven heats head-only masks, small bolus, and other thermoplastics.

Outer dimensions: 53 x 48 x 33 cm (21 x 19 x 13 in)  
Inner dimensions: 38 x 30.5 x 25 cm (15 x 12 x 10 in)  
Weight: 15.5 kg (34 lbs)



## Working with Dry Heat

Many years ago, Klarity pioneered the use of dry-heat technology for the fabrication of customized thermoplastic devices. Today, we strongly believe it to be the best-available method for preparing all standard thermoplastic masks, Klarity Cushions™, and bolus materials (in both sheet and pellet forms). Not only are dry-heat systems extraordinarily efficient; they are also safer and more comfortable for patients. The result is a superior heating method that renders water baths obsolete.

Dry-heat technology responds to three major needs in modern radiation therapy: efficiency, safety, and comfort. Ovens perform better than water baths in all three areas. With respect to efficiency, ovens come to temperature much faster than water baths and heat thermoplastic devices rapidly. When using dry heat, thermoplastic devices can also move straight from the oven to the patient, eliminating the need to shake or towel dry them. With respect to safety, replacing hot water with dry heat reduces cross-contamination and mitigates the risk of bacterial infection. Finally, with respect to comfort, most patients find a warm, dry mask much more pleasant than a hot, wet mask.

Dry-heat ovens exceed water baths in all aspects of performance, making therapists' lives easier and ensuring patient safety and comfort.

Learn more about  
dry-heat technology at  
[www.klaritymedical.com/ovenfaq](http://www.klaritymedical.com/ovenfaq)

## Water Baths and Bacterial Risk

In recent years, the case for dry heat has found increased support from a number of scientific studies that have determined water baths and other heating appliances to be potential reservoirs of dangerous microorganisms. As Brewer, Ravine, and Bru (2014) discuss in their 2014 article published in *Radiation Therapist*, water baths are easily contaminated by bacteria from both gloved and cleaned hands as well as by environmental microorganisms. The use of such appliances therefore increases the risk for bacterial infection, and particularly among special patient populations with impaired immunity response. Brewer, Ravine, and Bru

also found that most of the water baths used for the preparation of thermoplastic devices were not specifically designed for that purpose. For these reasons, the use of water baths requires a great deal of care on the part of the radiation therapist in order to break the chain of infection. Dry-heat technology offers a promising alternative for mitigating bacterial risk.

Brewer PS, Ravine TJ, Bru SE. Risk of patient infection from heating appliances used to produce thermoplastic immobilization devices. *Radiation Therapist*. 2014;23(2):125-35.

# Accessories

**BiteLok®**

**Indexing Bars**

**Bolus**

**Head Supports**

**SureMark®**

**Steritatt**

# Klarity BiteLok®\*



- Easily breathable mouthpiece
- Indexes to mask
- Removable for easy cleaning
- Smaller profile for better patient comfort
- Optional Tongue Depressor and Tongue Diverter

The BiteLok is made of a rigid, breathable mouthpiece and indexes to the patient's mouth using fast-setting dental putty. No water or warming is needed to activate the putty. Once the BiteLok is indexed to the patient's mouth, a thermoplastic mask is placed overtop. While the mask is still warm, a hands-free Quickfit tool forms the mask around the edges of the BiteLok mouthpiece. The result is a secure, reproducible mouthpiece that indexes to both patient and mask, that can also be removed for cleaning.

The Klarity BiteLok features a smaller profile than any other mouthpiece, and the wide airway passage allows for better breathability. The BiteLok is a comfortable size for most patients, even those with smaller mouths. The BiteLok is a significant advancement in comfortable, accurate positioning for head and neck treatments.



QuickFit tool indexing a thermoplastic mask over the BiteLok

\*US and International patents pending



## BiteLok Kit



**RNB-100**  
BiteLok Kit

The BiteLok Kit comes as a complete package with all tongue placement options included.

The kit contains:

- BiteLok
- Two Putty Packets
- QuickFit Tool
- Short and Long Tongue Depressors
- Right and Left Tongue Diverters
- Tongue Device Removal Tool

5 BiteLok® Kits/Case

## BiteLok



**RNB-10**  
BiteLok

The BiteLok can be ordered separately. The simplified BiteLok package contains:

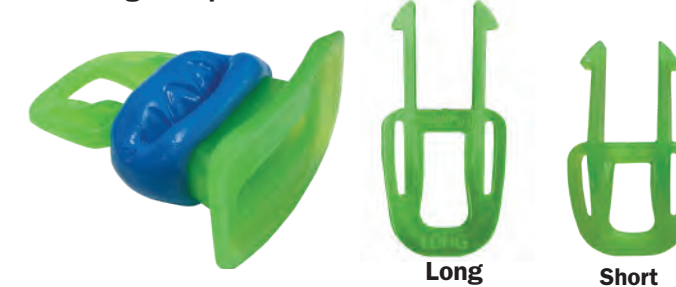
- BiteLok
- One Putty Packets
- QuickFit Tool

5 BiteLok Kits/Case

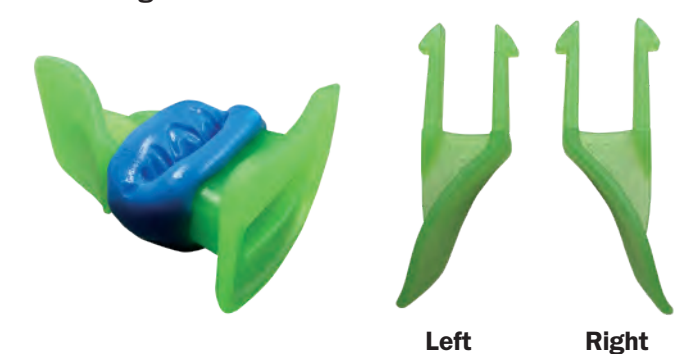
## Tongue Placement Kit

Optional tongue depressors and diverters allow for additional conformability and stabilization. Once the mask has fully cured, the BiteLok can be removed from the mask by pushing the corner of the mask inward to release the mouthpiece.

### Tongue Depressor



### Tongue Diverter



**RNB-11**  
Tongue Placement Accessory Kit

The Tongue Placement Accessory Kit contains:

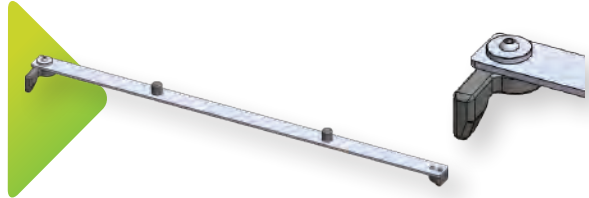
- Short and Long Tongue Depressors
- Right and Left Tongue Diverters
- Tongue Device Removal Tool

5 Tongue Placement Accessory Kits/Case

The BiteLok can be equipped with a tongue depressor or diverter for additional mouth placement options. The depressors and diverters securely snap into the BiteLok, and can be removed with a tongue device removal tool (included in the kit).



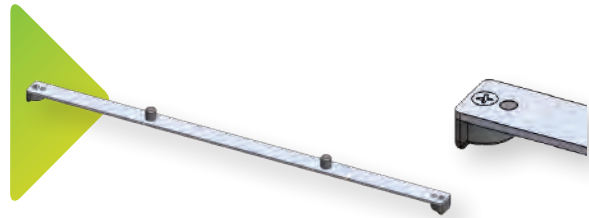
## Indexing Bars



### Turn-Lock Indexing Bars

**RNE-100AL**

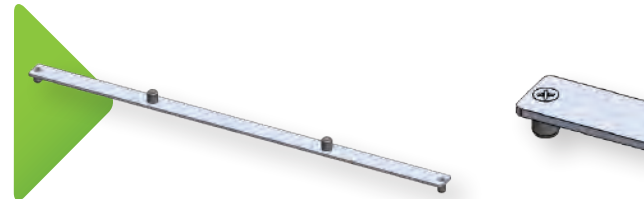
Turn-Lock Aluminum Indexing Bar for Exact™ Couch Top



### Press-Lock Indexing Bars

**RNE-102AL**

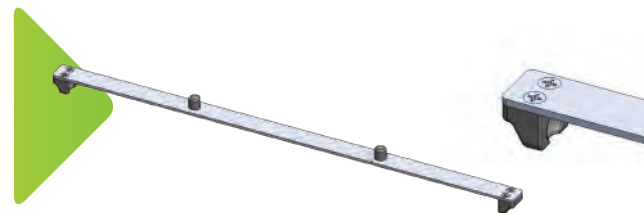
Press-Lock Aluminum Indexing Bar for Exact™ Couch Top



### Insert-Lock Indexing Bars

**RNE-103AL**

Insert-Lock Aluminum Indexing Bar for iBEAM®, Novalis, and TomoTherapy® Couch Tops



### C-Lock Indexing Bar

**RNE-104AL**

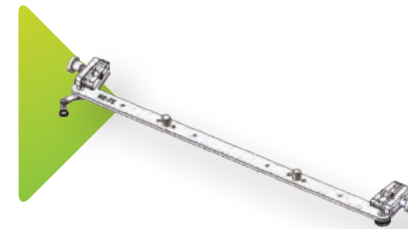
C-Lock Aluminum Indexing bar for Civco GE CT Couch Top



### Insert-Lock Indexing Bars for the Klarity Optek™ Overlay

**RE-630EA**

Aluminum Insert-Lock Indexing Bar for Klarity Optek™ Overlay for Elekta Couch Top



### Turn-Lock Indexing Bars for the Klarity Optek™ Overlay

**RE-7E**

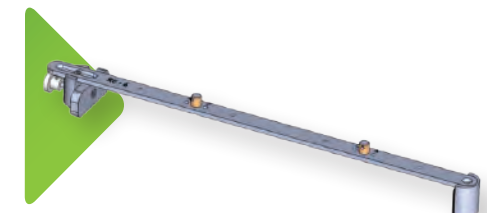
Aluminum Turn-Lock Indexing Bar for Klarity Optek™ Overlay for Varian Couch Top



### Varian Indexing Bar

**RE-7**

Aluminum Indexing Bar for Varian Truebeam Couch Tops  
6 mm thickness



### Universal Indexing Bar

**RE-6E**

Universal Aluminum Indexing Bar for all Couch Tops

# Klarity<sup>®</sup> Bolus

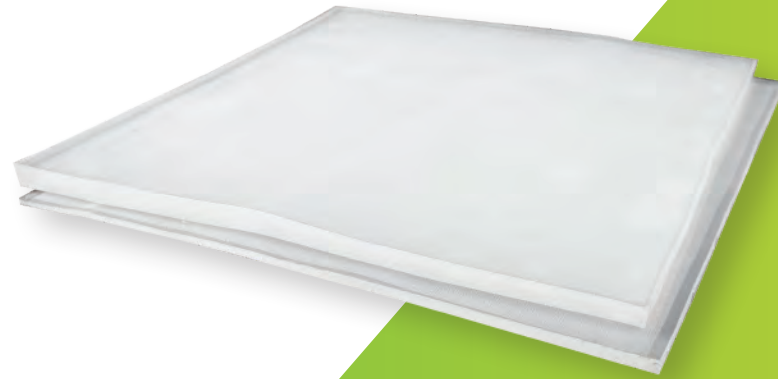
Klarity offers four types of bolus material:

**Klarity Bolus™:** a filmless, gel-based bolus with an optimal amount of stickiness

**Klarity ThermoSheets™:** easy to form, heat-activated thermoplastic sheets for bolus applications

**Bolus Pellets:** heat-activated pellets ideal for irregular contours, such as the nose or ear

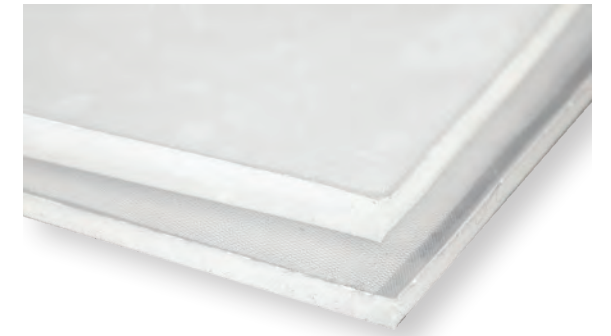
**Bolx™ Bolus:** a tissue-equivalent bolus encased in a layer of polyethylene skin



# Klarity<sup>®</sup> Bolus Sheets™

Klarity Bolus™ is an improved bolus material for radiation therapy. Our filmless bolus is tissue equivalent, and sufficiently flexible to conform to the patient's surface. It has the optimal amount of stickiness.

Klarity Bolus is translucent, making it ideal for viewing the treatment area or lesions underneath. Klarity Bolus™ features a slightly tacky surface for excellent conformity. It can be cut with scissors to any desired shape and can be layered as needed to increase thickness. It is made of a silicone gel that incorporates a thin polyester mesh netting to provide dimensional stability.



## Klarity Bolus™ Sheets

30x30 cm

### **RKB-3003**

Klarity Bolus™ 3mm

### **RKB-3005**

Klarity Bolus™ 5mm

### **RKB-3010**

Klarity Bolus™ 10mm

- Tissue Equivalent Bolus
- Density of 1.02g/cm<sup>3</sup>
- MR Safe





## ThermoSheets™

Klarity ThermoSheets™ are thermoplastic sheets for bolus applications. They are available in both solid and perforation patterns and can be molded just like a thermoplastic mask.

ThermoSheets™ are ideal to use as an aid for skin sparing and treating irregular contours or locations. Sheets can be heated in an oven or waterbath and are easy to use and mold. Dosimetric properties are the same as conventional thermoplastic masks.



### THICKNESSES:

**1.6 mm**  
(1/16 in)

**2.4 mm**  
(3/32 in)

**3.2 mm**  
(1/8 in)

Half Sheets are 18x24in (460x610mm). Full Sheets are 24x36in (920x610mm)

### SOLID

#### R-1600A

Klarity ThermoSheet™ with no perforation  
1.6 mm thickness  
46x61 cm (Half Sheet)

#### R-3200A

Klarity ThermoSheet™ with no perforation  
3.2 mm thickness  
46x61 cm (Half Sheet)

#### R-3200

Klarity ThermoSheet™ with no perforation  
3.2mm thickness  
92x61 cm (Full Sheet)

#### R-4000A

Klarity ThermoSheet™ with no perforation  
4.0 mm thickness  
46x61 cm (Half Sheet)

#### R-4000E

Klarity ThermoSheet™ with no perforation  
4.0 mm thickness  
15x15 cm

#### R-4000F

Klarity ThermoSheet™ with no perforation  
4.0 mm thickness  
30x30 cm

### 36% PERFORATION

#### R-2436A

Klarity ThermoSheet™ with 36% perforation  
2.4 mm thickness  
46x61 cm (Half Sheet)

#### R-2436

Klarity ThermoSheet™ with 36% perforation  
2.4 mm thickness  
92x61 cm (Full Sheet)

### 1% PERFORATION

#### R-3201A

Klarity ThermoSheet™ with 1% perforation  
3.2 mm thickness  
46x61 cm (Half Sheet)

#### R-3201

Klarity ThermoSheet™ with 1% perforation  
3.2 mm thickness  
92x61 cm (Full Sheet)

### 42% PERFORATION

#### R-3242A

Klarity ThermoSheet™ with 42% perforation  
3.2 mm thickness  
46x61 cm (Half Sheet)

#### R-3242

Klarity ThermoSheet™ with 42% perforation  
3.2 mm thickness  
92x61 cm (Full Sheet)



## Bolus Pellets

Klarity Bolus Pellets are ideal for custom bolus applications. Once heated in an oven or waterbath, bolus pellets become transparent and easy to form to any desired shape. Klarity Bolus Pellets are especially useful for custom bolus molding around the nose and ear. Dosimetric properties are the same as conventional mask thermoplastics.



#### R-601

Klarity Bolus Pellets  
1 lb jar

#### R-603

Klarity Bolus Pellets  
3 lb jar



- Heat activated bolus pellets
- Ideal for irregular contours
- Can be heated in an oven or waterbath
- MR Safe



## Bolx™ Bolus

Bolx I™ is tissue-equivalent flexible build up materials. It is designed to increase the surface dose and offers excellent conformity to body contours. Bolx I™ is made of a cured transparent gel and is encased in a layer of polyurethane skin.



### BOLX I™ BOLUS MATERIAL (WITH POLYURETHANE SKIN)

#### KAC-31033030

Bolx I™ Sheet  
.3 cm thickness  
30x30 in

#### KAC-31034040

Bolx I™ Sheet  
.3 cm thickness  
40x40 in

#### KAC-31052

Bolx I™ Sheet  
.5 cm thickness  
30x30 in

#### KAC-31102

Bolx I™ Sheet  
1 cm thickness  
30x30 in

#### KAC-31152

Bolx I™ Sheet  
1.5 cm thickness  
30x30 in

#### KAC-31202

Bolx I™ Sheet  
2 cm thickness  
30x30 in

# Head Supports

## Carbon Fiber Head Support



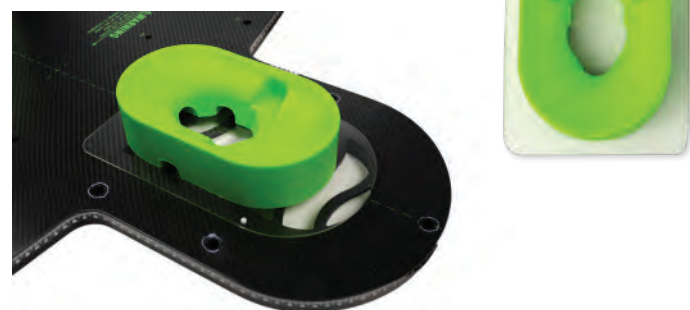
Carbon Fiber Head Supports fit a variety of tabletop and couch types. They can be ordered individually, or as a set of six for all different heights. Carbon Fiber Head Supports index to standard silverman pins, and can be used with any baseplate that uses standard silvermans. The carbon fiber material is extra durable and lightweight.

- R507-CF** Carbon Fiber Head Support Set of 6
- R507-ACF** Carbon Fiber Head Support A
- R507-BCF** Carbon Fiber Head Support B
- R507-CCF** Carbon Fiber Head Support C
- R507-DCF** Carbon Fiber Head Support D
- R507-ECF** Carbon Fiber Head Support E
- R507-FCF** Carbon Fiber Head Support F

## Prone Head Support

The Klarity Prone Head Support offers comfortable prone positioning by supporting the forehead, cheeks and chin, without compressing the area around the eyes, nose, and mouth. The Prone Head Support cushion is attached to an acrylic plate that indexes to standard silverman pins. It is compatible with any prone positioning baseplate that uses silverman pins for indexing.

**R520** Prone Head Support



## Silverman Head Support

Clear Silverman Head Supports fit a variety of tabletop and couch types. Silverman head supports are sold individually, or as a set of six, with six different heights for customization. **MR**



- R507** Silverman Head Support Set of 6
- R507-A** Silverman Head Support A
- R507-B** Silverman Head Support B
- R507-C** Silverman Head Support C
- R507-D** Silverman Head Support D
- R507-E** Silverman Head Support E
- R507-F** Silverman Head Support F

# SureMark®

## SureMark® Precision Skin Marking Systems



Klarity offers a full line of SureMark® labels and markers, including nonmetallic, semi-lucent, and liquid fiducial markers. Please visit [www.klaritymedical.com/suremark](http://www.klaritymedical.com/suremark) to see the full availability of SureMark® labels.




## SteriTatt

Klarity offers SteriTatt, the first medical marking device created specifically for radiation therapy. This single-use solution supports precision treatment and features sterile, non-toxic, low-allergy ink.

- |   |  |
|---|--|
| <b>KST-90001</b><br>SteriTatt Black Ink Cartridge<br>25 per box             | <b>KST-90015</b><br>SteriTatt Pink Ink Cartridge<br>25 per box               |
| <b>KST-90002</b><br>SteriTatt Black Ink Cartridge with Needle<br>25 per box | <b>KST-90050</b><br>SteriTatt Black Ink Dropper. 3CC.<br>10 droppers per box |





# Purchasing Information

| Item ID   | Description                                       | Dimensions | Pkg |
|---|---|------------|-----|
| <b>Klarity Baseplates &amp; Overlays</b> (Pages 6-28) |   |            |     |
| <b>Promise Proton System</b> (Pages 6-7)              |   |            |     |
| R680-ACF  | Promise™ Proton Therapy Baseplate with hand grips |            | EA. |

|                                       |                |             |     |
|---------------------------------------|----------------|-------------|-----|
| <b>Klarity SBRT System</b> (Page 8-9) |                |             |     |
| R62400-3CF                            | SBRT System    | 220 x 53 cm | EA. |
| R62400-3GF                            | MR SBRT System | 220 x 53 cm | EA. |

|  |  |             |     |
|--|--|-------------|-----|
| <b>Klarity Optek™ System</b> (Page 10) |  |             |     |
| R630-3SCF                              | Optek™ Overlay for S-type Masks, with hand grips | 105 x 61 cm | SET |

|                                      |   |  |     |
|--------------------------------------|---|--|-----|
| <b>Klarity SRS Adaptor</b> (Page 11) |   |  |     |
| S-20A                                | SRS Adaptor for standard baseplates from Klarity and others |  | EA. |
| S-20B                                | SRS Adaptor for Civco S-type baseplates                     |  |     |

|   |                                      |           |     |
|---|--------------------------------------|-----------|-----|
| <b>Optek™ Demi Baseplates</b> (Page 12) |                                      |           |     |
| R630-SHCF                               | Optek Demi Baseplate for S-type Mask | 58 x 61cm | EA. |
| R630-OHCF                               | O-type/U-frame Demi-Baseplate        | 58 x 61cm | EA. |

|   |                      |                |     |
|---|----------------------|----------------|-----|
| <b>Klarity MultiFix™ Baseplates</b> (Page 13) |                      |                |     |
| R605-HCF                                      | Head Only MultiFix™  | 35.5 x 25.5 cm | EA. |
| R605-HPCF                                     | Prone Head MultiFix™ | 38.5 x 25.7 cm | EA. |

|  |  |             |     |
|--|--|-------------|-----|
| <b>Klarity Athena™ Supine Breast System</b> (Page 14-15) |  |             |     |
| R610-PDCF  | Athena Supine Breast System with Wingboard               | 158 x 41 cm | EA. |
| R610-NDCF  | Athena Supine Breast System with Arm Cups and Hand Grips | 145 x 41 cm | EA. |
| R610-NTCF  | Athena Winboard  |             | EA. |
| R610-PDKF  | MR Athena Supine Breast System with Wingboard            | 158 x 41 cm | EA. |
| R610-PDCF  | MR Athena Wingboard                                      |             | EA. |

|  |  |            |      |
|--|--|------------|------|
| <b>Klarity WingSpan™ Baseplate</b> (Page 16) |  |            |      |
| R632-BTCF                                    | Carbon Fiber Wing Board with T-shaped Hand Grips       | 56 x 58 cm | EA.  |
| R632-BTGF                                    | MR WingSpan™ Baseplate                                 | 56 x 58 cm | EA.  |
| RNH-632                                      | Handgrip Extenders for the Klarity WingSpan™ Baseplate |            | PAIR |

|   |  |   |     |
|---|--|---|-----|
| <b>Klarity Leg Positioner</b> (Page 17) |  |   |     |
| R634-LCF                                | Carbon Fiber Leg Positioner Baseplate with Knee Cushion, 2 Elevation Blocks and Hand Grips | 86.4 cm (length) x 44.5 cm (width) x 26.7 cm (max height) | SET |
| R634-LGF                                | MR Leg Positioner (Elevation wedges at 10/20/30)   | 86.4 x 44.5 cm  | SET |

|                                       |   |  |     |
|---------------------------------------|---|--|-----|
| <b>PelvicFix™ Baseplate</b> (Page 18) |   |  |     |
| R606-ACF                              | PelvicFix™ Baseplate                            |  | EA. |
| R606-B-1                              | Indexable Thigh Spacer for PelvicFix™ Baseplate |  | EA. |

|  |   |   |  |
|--|---|---|--|
| <b>MRI Medibord™ Overlays</b> (Page 19-24) |   |   |  |
| KME-SSMR-01                                | MRI Medibord™ Overlay for Siemens Magnetom Skyra & Aera                       | 172.6cm length x 53cm width x 2cm thickness |  |
| KME-SSMR-AC                                | Torso Coil Holder for MRI Medibord™ Overlay for Siemens Magnetom Skyra & Aera |   |  |
| KME-SSMR-IB                                | Indexing Bar for MRI Medibord™ Overlay for Siemens Magnetom Skyra & Aera      |   |  |

|              |   |   |  |
|--------------|---|---|--|
| KME-SSMR-02  | MRI Medibord™ Overlay for Siemens Magnetom Express & Excited (1.5T)                       | 166.5cm length x 50.9cm width x 2cm thickness |  |
| KME-SSMR-AC2 | Torso Coil Holder for MRI Medibord™ Overlay for Siemens Magnetom Express & Excited (1.5T) |   |  |
| KME-SSMR-IB2 | Indexing Bar for MRI Medibord™ Overlay for Siemens Magnetom Express & Excited (1.5T)      |   |  |

|             |  |   |  |
|-------------|--|---|--|
| KME-SVMR-WI | MRI Medibord™ Overlay for Siemens Magnetom Vida                  | 202.8cm length x 52cm width x 2cm thickness |  |
| KME-SVMR-AC | Coil Holder for MRI Medibord™ Overlay for Siemens Magnetom Vida  |   |  |
| KME-SVMR-IB | Indexing Bar for MRI Medibord™ Overlay for Siemens Magnetom Vida |   |  |

|             |  |   |  |
|-------------|--|---|--|
| KME-PHIN-WI | MRI Medibord™ Overlay for Philips Ingenia                  | 210.7cm length x 53cm width x 2cm thickness |  |
| KME-PHIN-AC | Coil Holder for MRI Medibord™ Overlay for Philips Ingenia  |   |  |
| KME-PHIN-IB | Indexing Bar for MRI Medibord™ Overlay for Philips Ingenia |   |  |

|             |  |   |  |
|-------------|--|---|--|
| KME-PHAC-WI | MRI Medibord™ Overlay for Philips Achieva                  | 236cm length x 50.3cm width x 2cm thickness |  |
| KME-PHAC-AC | Coil Holder for MRI Medibord™ Overlay for Philips Achieva  |   |  |
| KME-PHAC-IB | Indexing Bar for MRI Medibord™ Overlay for Philips Achieva |   |  |

|             |   |   |  |
|-------------|---|---|--|
| KME-GEKU-WI | MRI Medibord™ Overlay for GE Signa Voyager & Pioneer                  | 82cm main length / 52cm support length x 39cm width x 2cm thickness |  |
| KME-GEKU-AC | Coil Holder for MRI Medibord™ Overlay for GE Signa Voyager & Pioneer  |   |  |
| KME-GEKU-IB | Indexing Bar for MRI Medibord™ Overlay for GE Signa Voyager & Pioneer |   |  |

|   |  |   |     |
|---|--|---|-----|
| <b>PET-MRI Medibord™ Overlays</b> (Page 25) |  |   |     |
| KME-SBMR-WI                                 | PET-MRI Medibord™ Overlay for Siemens Biograph MMR                                   | 200 cm length x 50.3 cm width x 2cm thickness | EA. |
| KME-SBMR-HN                                 | Head & Neck Coil Holder for PET-MRI Medibord™ Overlay for Siemens Biograph MMR       |   |     |
| KME-SBMR-AB                                 | Standard Torso Coil Holder for PET-MRI Medibord™ Overlay for Siemens Biograph MMR    |   |     |
| KME-SBMR-ABS                                | Small Torso Coil Holder for PET-MRI Medibord™ Overlay for Siemens Biograph MMR       |   |     |
| KME-SBMR-ABL                                | Large Torso Coil Holder for PET-MRI Medibord™ Overlay for Siemens Biograph MMR       |   |     |
| KME-SBMR-ABXL                               | Extra-Large Torso Coil Holder for PET-MRI Medibord™ Overlay for Siemens Biograph MMR |   |     |
| KME-SBMR-IB                                 | Indexing Bar for PET-MRI Medibord™ Overlay for Siemens Biograph MMR                  |   |     |

### Klarity Masks (Pages 29-50)

#### Klarity Green® Proton-K Masks (for Klarity's Promise Proton Therapy System (Page 6-7); Page 30)

|              |   |  |       |
|--------------|---|--|-------|
| RG-PH-2436C  | Green Proton-K Head Mask with 36% perforation, 2.4mm            |  | 10/CS |
| RG-PH-3242C  | Green Proton-K Head Mask with 42% perforation, 3.2mm            |  | 10/CS |
| RG-BSL-3242  | Green Proton-K Head & Shoulder Mask with 36% perforation, 2.4mm |  | 10/CS |
| RG-BHS-A2436 | Green Proton-K Head & Shoulder Mask with 42% perforation, 3.2mm |  | 10/CS |

#### Klarity LiteGreen™ Proton-C Masks (for Civco's ProForm™ Proton Therapy System; Page 30)

|          |   |  |       |
|----------|---|--|-------|
| RG461CH2 | LiteGreen Proton-C Head Mask with 12% perforation, 2.4mm            |  | 10/CS |
| RG461C2  | LiteGreen Proton-C Head & Shoulder Mask with 12% perforation, 2.4mm |  | 10/CS |

#### Klarity Green® Proton-B Masks (for the Qfix® BoS™ System; Page 31)

|              |  |              |       |
|--------------|--|--------------|-------|
| RG-BHS-3242  | Green Small Proton-B Head Mask with 42% perforation, 3.2mm     | 28.5 cm wide | 10/CS |
| RG-BHM-3242  | Green Medium Proton-B Head Mask with 42% perforation, 3.2mm    | 34 cm wide   | 10/CS |
| RG-BSL-3242  | Green Large Proton-B Head Mask with 42% perforation, 3.2mm     | 48 cm wide   | 10/CS |
| RG-BHS-A2436 | Green Pediatric Proton-B Head Mask with 42% perforation, 3.2mm | 24 cm wide   | 10/CS |

| <b>Klarity Blue™ Proton-B Masks</b> (for the Qfix® BoS™ System; Page 31) |  |              |       |
|--|--|--------------|-------|
| RB-BHS-3242  | Blue Small Proton-B Head Mask with 42% perforation, 3.2mm  | 28.5 cm wide | 10/CS |
| RB-BHM-3242  | Blue Medium Proton-B Head Mask with 42% perforation, 3.2mm | 34 cm wide   | 10/CS |
| RB-BSL-3242  | Blue Large Proton-B Head Mask with 42% perforation, 3.2mm  | 48 cm wide   | 10/CS |

| <b>Klarity Blue™ SRS Masks</b> (Pages 32-33) |  |  |     |
|--|--|--|-----|
| S-2000                                       | Blue SRS Head Mask Set, includes Posterior Mask, Extended OpenFace Anterior Mask, and Simple Shim System™, 3.2mm |  | SET |
| S-2001                                       | Blue SRS Head Mask Set, includes Posterior Mask, Extended Anterior Mask, and Simple Shim System™, 3.2mm          |  | SET |
| R-QST-5                                      | Single Shim for the Klarity SRS Mask   |  | EA. |

| <b>Klarity Green® S-type Masks</b> (Pages 34-35) |   |  |      |
|--|---|--|------|
| RG460SHT   | Green S-type Head Mask with 36% perforation, 2.4 mm   |  | 6/CS |
| RG461SHT   | Green S-type Head Mask with 42% perforation, 3.2 mm   |  | 6/CS |
| RG460-4SHT                                       | Green S-type Head Mask with AccuPerf™, 2.4 mm   |  | 6/CS |
| RG461-4SHT                                       | Green S-type Head Mask with AccuPerf™, 3.2 mm   |  | 6/CS |
| RG461-5SHT                                       | Green S-type Extended Neck Head Mask with AccuPerf™, 3.2 mm                                     |  | 4/CS |
| RG460ST  | Green S-type Head & Shoulder Mask with 36% perforation, 2.4 mm                                  |  | 6/CS |
| RG461ST  | Green S-type Head & Shoulder Mask with 42% perforation, 3.2 mm                                  |  | 6/CS |
| RG460-4ST  | Green S-type Head & Shoulder Mask with AccuPerf™, 2.4 mm  |  | 6/CS |
| RG461-4ST  | Green S-type Head & Shoulder Mask with AccuPerf™, 3.2 mm  |  | 6/CS |
| RG460SC  | Green S-type Pediatric Head & Shoulder Mask with 36% perforation, 2.4 mm (for Optek Board only) |  | 6/CS |
| RG461SC  | Green S-type Pediatric Head & Shoulder Mask with 42% perforation, 3.2 mm (for Optek Board only) |  | 6/CS |

| <b>Klarity Blue™ S-type Masks</b> (Pages 34-35) |  |  |      |
|---|--|--|------|
| RB461-3210SHT                                   | Blue S-Type Head Mask, 10% perforation, 3.2mm            |  | 6/CS |
| RB461-3210ST                                    | Blue S-Type Head & Shoulder Mask, 10% perforation, 3.2mm |  | 6/CS |

| <b>Klarity White™ S-type Masks</b> (Pages 34-35) |  |  |      |
|--|--|--|------|
| R461SHT  | White S-type Head Mask with 42% perforation, 3.2 mm            |  | 6/CS |
| R461-4SHT  | White S-type Head Mask with AccuPerf™, 3.2 mm                  |  | 6/CS |
| R461ST   | White S-type Head & Shoulder Mask with 42% perforation, 3.2 mm |  | 6/CS |
| R461-4ST   | White S-type Head & Shoulder Mask with AccuPerf™, 3.2 mm       |  | 6/CS |

| <b>Klarity White™ S-type OpenFace Masks</b> (Pages 36-37) |   |  |      |
|---|---|--|------|
| R461-8SHTF  | White S-type OpenFace Head Mask with AccuPerf™, 3.2 mm            |  | 6/CS |
| R461-8STF   | White S-type OpenFace Head & Shoulder Mask with AccuPerf™, 3.2 mm |  | 6/CS |

| <b>Klarity Green® S-type OpenFace Masks</b> (Pages 36-37) |   |  |      |
|---|---|--|------|
| RG461-8SHTF   | Green S-type OpenFace Head Mask with AccuPerf™, 3.2 mm            |  | 6/CS |
| RG461-8STF  | Green S-type OpenFace Head & Shoulder Mask with AccuPerf™, 3.2 mm |  | 6/CS |

| <b>Klarity Blue™ S-type OpenFace Masks</b> (Pages 36-37) |  |  |      |
|--|--|--|------|
| RB461-6SHTF  | Blue S-type OpenFace Extended Head Mask with AccuPerf™, 3.2 mm   |  | 6/CS |
| RB461-6STF   | Blue S-type OpenFace Head & Shoulder Mask with AccuPerf™, 3.2 mm |  | 6/CS |

| <b>Klarity Green® S-type Open Eye and Mouth Masks</b> (Pages 34-37) |   |  |      |
|---|---|--|------|
| RG461-8SHTM   | Green S-type Open Eye & Mouth Head Mask with AccuPerf™, 3.2 mm            |  | 6/CS |
| RG461-8STEM   | Green S-type Open Eye & Mouth Head & Shoulder Mask with AccuPerf™, 3.2 mm |  | 6/CS |

| <b>Klarity Blue™ S-type Open Eye and Mouth Masks</b> (Pages 34-37) |  |  |      |
|--|--|--|------|
| RB461-6SHTF  | Blue S-type OpenFace Extended Head Mask with AccuPerf™, 3.2 mm   |  | 6/CS |
| RB461-6STF   | Blue S-type OpenFace Head & Shoulder Mask with AccuPerf™, 3.2 mm |  | 6/CS |

| <b>Klarity Blue™ U-frame Masks</b> (Pages 38-40) |  |                |       |
|--|--|----------------|-------|
| RB430W-3210                                      | Blue ProfileFrame™ Head Mask with 10% perforation, 3.2 mm          | 25.4 x 25.4 cm | 12/CS |
| RB431W-3210                                      | Blue ProfileFrame™ Extended Head Mask with 10% perforation, 3.2 mm | 25.4 x 30.5 cm | 12/CS |

| <b>Klarity Green® U-frame Masks</b> (Pages 38-40) |   |                |       |
|---|---|----------------|-------|
| RG420W  | Green ProfileFrame™ Head Mask with 36% perforation, 2.4 mm          | 25.4 x 25.4 cm | 12/CS |
| RG430W  | Green ProfileFrame™ Head Mask with 42% perforation, 3.2 mm          | 25.4 x 25.4 cm | 12/CS |
| RG420-1W  | Green ProfileFrame™ Head Mask with AccuPerf™, 2.4 mm                | 25.4 x 25.4 cm | 12/CS |
| RG430-1W  | Green ProfileFrame™ Head Mask with AccuPerf™, 3.2 mm                | 25.4 x 25.4 cm | 12/CS |
| RG421W  | Green ProfileFrame™ Extended Head Mask with 36% perforation, 2.4 mm | 25.4 x 30.5 cm | 12/CS |
| RG431W  | Green ProfileFrame™ Extended Head Mask with 42% perforation, 3.2 mm | 25.4 x 30.5 cm | 12/CS |
| RG464-1W  | Green ProfileFrame™ Extended Head Mask with AccuPerf™, 3.2 mm       | 25.4 x 30.5 cm | 12/CS |
| RG420E  | Green U-Max™ WideFace Head Mask with 36% perforation, 2.4 mm        | 25.4 x 25.4 cm | 12/CS |
| RG430E  | Green U-Max™ WideFace Head Mask with 42% perforation, 3.2 mm        | 25.4 x 25.4 cm | 12/CS |

| <b>Klarity White™ U-frame Masks</b> (Pages 38-40) |   |                |       |
|---|---|----------------|-------|
| R430UC  | White EzeFrame™ Head Mask, 3.2 mm                                   | 22.9 x 25.4 cm | 12/CS |
| R450U   | White ContourFrame™ Head Mask, 2.4 mm                               | 22.9 x 25.4 cm | 12/CS |
| R420W   | White ProfileFrame™ Head Mask with 36% perforation, 2.4 mm          | 25.4 x 25.4 cm | 12/CS |
| R430W   | White ProfileFrame™ Head Mask with 42% perforation, 3.2 mm          | 25.4 x 25.4 cm | 12/CS |
| R421W   | White ProfileFrame™ Extended Head Mask with 36% perforation, 2.4 mm | 25.4 x 30.5 cm | 12/CS |
| R431W   | White ProfileFrame™ Extended Head Mask with 42% perforation, 3.2 mm | 25.4 x 30.5 cm | 12/CS |

| <b>Klarity Green® and Klarity LiteGreen™ E-type Masks</b> (Page 41) |  |  |       |
|---|--|--|-------|
| RLG-ESH3-2412C  | LiteGreen E-type Icon™ Head Mask with 12% perforation, 2.4 mm            |  | 10/CS |
| RLG-ESH1-2412C  | Green E-type Fraxion™ Head Mask with 12% perforation, 2.4 mm             |  | 10/CS |
| RLG-ESH2-2412C  | Green E-type Fraxion™ Rounded Head Mask with 12% perforation, 2.4 mm     |  | 10/CS |
| RG-ELH-2022   | Green E-type HeadSTEP™ Head Mask with 22% perforation, 2.0 mm            |  | 10/CS |
| RG-ELS-2022   | Green E-type HeadSTEP™ Head & Shoulder Mask with 22% perforation, 2.0 mm |  | 10/CS |

| <b>Klarity Green® and Klarity White™ Stereotactic Masks</b> (for BrainLAB Systems; Pages 42) |  |  |      |
|--|--|--|------|
| R406-1   | White Stereotactic Head Frame Mask Set, Type A                     |  | 5/CS |
| R408   | White Stereotactic Head Frame Mask Set, Type B *special order only |  | 5/CS |
| R408-2   | White Stereotactic Head & Shoulder Frame Mask Set, Type B          |  | 3/CS |
| RG406-4  | Green Stereotactic Head Frame Mask Set, Type A                     |  | 5/CS |
| RG408-4AC  | Green Stereotactic Head Frame Mask Set, TypeB                      |  | 5/CS |
| RG408-2  | Green Stereotactic Head & Shoulder Frame Mask Set, Type B          |  | 3/CS |

| <b>Klarity Green® and Klarity White™ Dynamic Mask Sets</b> (for BrainLAB Systems; Pages 43) |                        |  |      |
|---|------------------------|--|------|
| RG408A-1  | Green Dynamic Mask Set |  | 5/CS |
| R408A-1   | White Dynamic Mask Set |  | 5/CS |

| <b>Klarity Green® and Klarity LiteGreen™ O-type Masks</b> (Pages 44-45) |  |  |       |
|---|--|--|-------|
| RDLG105-2412C   | LiteGreen O-type 3-point Head Mask (with nose hole) with 12% perforation, 2.4 mm     |  | 10/CS |
| RDLG107-2412C   | LiteGreen O-Type 3-Point Rounded Head Mask (with nosehole), 12% perforation, 2.4mm   |  | 10/CS |
| RDG105-24A  | Green O-type 3-point Head Mask with AccuPerf™, 2.4 mm                                |  | 10/CS |
| RDG105-32A  | Green O-type 3-point Head Mask with AccuPerf™, 3.2 mm                                |  | 10/CS |
| RDG107-32A  | Green O-type 3-point Rounded Head Mask with AccuPerf™, 3.2 mm                        |  | 10/CS |
| RDG107-24A  | Green O-Type 3-Point Rounded Head Mask (with nosehole), AccuPerf™, 2.4mm             |  | 10/CS |
| RDLG207-8A24  | LiteGreen O-type 5-point Head & Shoulder Mask (with nose hole) with AccuPerf™, 2.4mm |  | 10/CS |
| RDLG207-8A  | LiteGreen O-type 5-point Head & Shoulder Mask (with nose hole) with AccuPerf™, 3.2mm |  | 10/CS |
| RDG207-24A  | Green O-type 5-point Head & Shoulder Mask (with nose hole) with AccuPerf™, 2.4 mm    |  | 10/CS |
| RDG207-32A  | Green O-type 5-point Head & Shoulder Mask (with nose hole) with AccuPerf™, 3.2 mm    |  | 10/CS |

| <b>Klarity LiteGreen™ O-type OpenFace Masks</b> (Pages 44-45) |  |  |       |
|---|--|--|-------|
| RDLG105-24AF  | LiteGreen O-Type 3-Point Open Face Head Mask, 2.4mm            |  | 10/CS |
| RDLG207-24AF  | LiteGreen O-Type 5-Point Open Face Head & Shoulder Mask, 2.4mm |  | 10/CS |

| <b>Klarity LiteGreen™ O-type Pediatric Masks</b> (Pages 45) |  |  |       |
|---|--|--|-------|
| RDLG104-2412C   | LiteGreen O-Type 3-Point Pediatric Head Mask with 12% perforation, 2.4mm |  |       |
| RDLG204-2412C   | LiteGreen O-Type 5-Point Pediatric Head Mask with 12% perforation, 2.4mm |  | 10/CS |

| <b>Klarity Green® P-type Masks</b> (for PosiFix™ Systems); Pages 46-47) |  |  |       |
|---|--|--|-------|
| RG-PRT3-24A   | Green P-type 3-point Mask with AccuPerf™, 2.4 mm                 |  | 10/CS |
| RG-PRT5-24A   | Green P-type 5-point Head & Shoulder Mask with AccuPerf™, 2.4 mm |  | 10/CS |

| <b>Klarity White™ P-type Masks</b> (for PosiFix™ Systems); Pages 46-47) |  |  |       |
|---|--|--|-------|
| R-PRT2-2415   | White P-Type 2-Point Head Mask (with nosehole) with 15% perforation, 2.4 mm                  |  | 10/CS |
| R-PRT3-2415   | White P-Type 3-Point Head Mask (with nosehole) with 15% perforation, 2.4mm                   |  | 10/CS |
| R-PRT33-2415  | White P-Type 3-Point Short Head Mask (with nosehole) with 15% perforation, 2.4mm             |  | 10/CS |
| R-PRT31-2415  | White P-Type 3-Point Rounded Head Mask (with nosehole) with 15% perforation, 2.4mm           |  | 10/CS |
| R-PRT44-2415  | White P-Type 3-Point Extended Head Mask (with nosehole) with 15% perforation, 2.4mm          |  | 10/CS |
| R-PRTL-2415   | White P-Type 4-Point Head & Neck Mask (with nosehole) with 15% perforation, 2.4mm            |  | 10/CS |
| R-PRT5-2415   | White P-Type 5-Point Head & Shoulder Mask (with nosehole) with 15% perforation, 2.4mm        |  | 10/CS |
| R-PRT55-2415  | White P-Type 5-Point Narrow Head & Shoulder Mask (with nosehole) with 15% perforation, 2.4mm |  | 10/CS |

| <b>Klarity Green® V-type Versa Masks</b> (For Versa Systems; Page 48) |  |  |      |
|---|--|--|------|
| RG460-4VHT  | Green V-type Head Mask with AccuPerf™, 2.4 mm            |  | 6/CS |
| RG460-4VT   | Green V-type Head & Shoulder Mask with AccuPerf™, 2.4 mm |  | 6/CS |

| <b>Klarity White™ Head &amp; Thorax Masks</b> (for the Klarity Athena™ Supine Breast System R610-PDCF; Page 49) |   |  |     |
|---|---|--|-----|
| R322-5424C1-L   | White Head & Thorax Mask, Left Side, 3.2mm  |  | EA. |
| R322-5424C1-R   | White Head & Thorax Mask, Right Side, 3.2mm |  | EA. |

| <b>Klarity White™ Breast &amp; Torso Masks</b> (for the Klarity Supine Breast System R611-5SDCF; Page 49) |  |            |     |
|---|--|------------|-----|
| R91-2436M   | White Pelvic Mask with 36% Perforation, 2.4 mm | 46 x 48 cm | EA. |
| R91-3242M   | White Pelvic Mask with 42% Perforation, 3.2 mm | 46 x 48 cm | EA. |
| R91-2400M   | White Pelvic Mask, solid, 2.4 mm               | 46 x 48 cm | EA. |

| <b>Klarity White™ O-type Breast and Pelvic Masks</b> (for Orfit Systems; Page 49) |  |              |     |
|---|--|--------------|-----|
| RD305-3242C   | White 2-Point O-Type Breast Mask, 42% perforation, 3.2mm | 25 x 40.8 cm | EA. |
| RD301-3242  | White 2-Point O-Type Breast Mask, 42% perforation, 3.2mm | 34 x 23 cm   | EA. |
| RD901-2436  | White 4-Point O-Type Pelvic Mask, 36% perforation, 2.4mm | 46.3 x 48 cm | EA. |
| RD901-3242  | White 4-Point O-Type Pelvic Mask, 42% perforation, 3.2mm | 46.3 x 48 cm | EA. |

| <b>Klarity White™ PelvicFix™ Masks</b> (for the Klarity PelvicFix™ System and Civco HipFix System; Page 49) |  |            |     |
|---|--|------------|-----|
| R902-1A   | PelvicFix™ Mask insert for reusable frame, solid, 2.4 mm *special order only | 46 x 56 cm | EA. |
| R902-3A   | PelvicFix™ Mask insert for reusable frame with 42% perforation               | 46 x 56 cm | EA. |
| R902-7  | PelvicFix™ Mask insert for reusable frame, solid *special order only         | 46 x 56 cm | EA. |
| R902-3  | PelvicFix™ Bodycast with reusable frame, 42% perforation, 3.2mm              | 46 x 56 cm | EA. |

| <b>Klarity LiteGreen™ HipFix Mask</b> (for newer Civco Boards; Page 49) |   |                |     |
|---|---|----------------|-----|
| RLG902-32CB   | LiteGreen HipFix Mask with reinforced perforation, 3.2 mm | 58.8 x 45.7 cm | EA. |

| <b>Klarity Cushions™</b> (Pages 51-60) |  |              |     |
|--|--|--------------|-----|
| R550-U                                 | U-Cushion Klarity Cushion™ for Head Support                        | 23 x 30 cm   | EA. |
| R550-U2                                | U-Cushion Klarity Cushion™ for Head Support with neck support      | 23 x 30 cm   | EA. |
| R550-U3                                | U-Cushion Klarity Cushion™ for Head Support                        | 23 x 35 cm   | EA. |
| R550-U4                                | U-Cushion Klarity Cushion™ for Head Support                        | 20 x 25 cm   | EA. |
| R550-U5                                | U-Cushion Klarity Cushion™ for Head Support                        | 23 x 25 cm   | EA. |
| R550-U6                                | U-Cushion Klarity Cushion™ for Head Support with additional fill   | 23 x 38 cm   | EA. |
| R550-U7                                | U-Cushion Klarity Cushion™ for Head Support with double fill       | 23 x 35 cm   | EA. |
| R550-U8                                | U-Cushion Klarity Cushion™ for Head Support with triple fill       | 23 x 38 cm   | EA. |
| R550-U9                                | U-Cushion Klarity Cushion™ for Head Support                        | 23 x 38 cm   | EA. |
| R550-M                                 | Standard Klarity Cushion™ for Head Support                         | 20 x 25 cm   | EA. |
| R550-M1                                | Standard Klarity Cushion™ for Head Support                         | 23 x 30 cm   | EA. |
| R550-M2                                | Standard Klarity Cushion™ for Head Support with double fill        | 20 x 25 cm   | EA. |
| R550-M3                                | Standard Klarity Cushion™ for Head Support                         | 23 x 35 cm   | EA. |
| R550-S                                 | Standard Klarity Cushion™ for Head Support                         | 15 x 20 cm   | EA. |
| R550-L                                 | Standard Klarity Cushion™ for Head Support                         | 20 x 40 cm   | EA. |
| R550-L2                                | Standard Klarity Cushion™ for Head Support                         | 40 x 60 cm   | EA. |
| R550-T                                 | Head & Shoulder Klarity Cushion™                                   | 46 x 41 cm   | EA. |
| R550-TL                                | Head & Shoulder Extended Klarity Cushion™                          | 46 x 46 cm   | EA. |
| R550-T2                                | Head & Shoulder Klarity Cushion™ Plus with neck support            | 46 x 41 cm   | EA. |
| R550-T2L                               | Head & Shoulder Extended Klarity Cushion™ Plus with neck support   | 46 x 46 cm   | EA. |
| R550-H1                                | Head-Only Shell Klarity Cushion™                                   | 26 x 35 cm   | EA. |
| R550-HS2L                              | Head & Shoulder Extended Shell Klarity Cushion™ with neck support  | 46 x 50 cm   | EA. |
| R550-P                                 | Pediatric Head & Shoulder Klarity Cushion™                         | 28 x 36 cm   | EA. |
| R550-CEL                               | Klarity Cushion™ for Leksell Gamma Knife® Icon™ System from Elekta | 17.5 x 35 cm | EA. |
| R550-BOS3                              | Klarity Cushion™ for Proton Therapy with neck support              | 48 x 63 cm   | EA. |
| R550-BOS                               | Klarity Cushion™ for Proton Therapy with neck support              | 46 x 45 cm   | EA. |
| R550-CM1                               | Head-Only Klarity Cushion™ for Proton Therapy with neck support    | 10 x 16 cm   | EA. |
| R565-605C                              | Cleanable Strap Set  |              |     |
| R560-S                                 | Klarity Shell Mold for S-type and U-frame baseplates               |              |     |
| R560-O                                 | Klarity Shell Mold for O-type baseplates                           |              |     |
| R560-M                                 | Klarity Shell Mold for MultiFix™ Baseplate                         |              |     |

| <b>Klarity Vacuum Bags</b> (Pages 62-67) All vacuum bags can be equipped with indexing bar. |  |              |     |
|---|--|--------------|-----|
| R7100-01C   | Vacuum Bag for Head Support, 1 liter fill    | 20 x 25 cm   | EA. |
| R7101-03C   | Vacuum Bag for Head Support, 3 liter fill    | 30 x 40 cm   | EA. |
| R7106-2.25C   | Vacuum Bag for Head Support, 2.25 liter fill | 25 x 50 cm   | EA. |
| R7301-15C   | Vacuum Bag for Breast Support, 15 liter fill | 50 x 70 cm   | EA. |
| R7401-20C   | Vacuum Bag for Body Support, 20 liter fill   | 70 x 70 cm   | EA. |
| R7506-40C   | Vacuum Bag for Body Support, 40 liter fill   | 100 x 100 cm | EA. |
| RC7504-17.5C  | Vacuum Bag for Body Support, 17.5 liter fill | 100 x 70 cm  | EA. |



|              |  |                   |     |
|--------------|--|-------------------|-----|
| R7504-30C    | Vacuum Bag for Body Support, 30 liter fill   | 100 x 70 cm       | EA. |
| R7504-35C    | Vacuum Bag for Body Support, 35 liter fill   | 100 x 70 cm       | EA. |
| R7504-35BC   | Vacuum Bag for Body Support with indexing bar, 35 liter fill                             | 100 x 70 cm       | EA. |
| R7505-30C    | Vacuum Bag for Body Support, 30 liter fill   | 100 x 80 cm       | EA. |
| R7536-30C    | Vacuum Bag for Body Support, 30 liter fill   | 120 x 70 cm       | EA. |
| R7540-30C    | Vacuum Bag for Body Support, 30 liter fill   | 150 x 75 cm       | EA. |
| R7540-60C    | Vacuum Bag for Body Support, 60 liter fill   | 150 x 75 cm       | EA. |
| R7512-55C    | Vacuum Bag for Body Support, 55 liter fill   | 150 x 80 cm       | EA. |
| R7509-75C    | Vacuum Bag for Body Support, 75 liter fill   | 150 x 100 cm      |     |
| R7202-09C    | Vacuum Bag for Head & Shoulder Support, 9 liter fill                                     | 67 x 62 cm        | EA. |
| R7200-05C    | Vacuum Bag for Head & Shoulder Support, 5 liter fill                                     | 50 x 70 cm        | EA. |
| RC7221-25BC  | Vacuum Bag for Body Support with indexing bar, 25 liter fill                             | 138 x 87 cm       | EA. |
| R7661-20C    | Vacuum Bag for Upper Body Support, 20 liter fill   | 58.5 x 90 cm      | EA. |
| R7407-30C    | Vacuum Bag for Pelvic Support (25 x 25 cm Center Cut), 30 liter fill                     | 100 x 70 cm       | EA. |
| R7626-20C    | WingSpan™ Vacuum Bag, 20 liter fill  | 104 x 53 cm       | EA. |
| R7644-32.5BC | SBRT Vacuum Bag for Body Support with indexing bar, 32.5 liter fill                      | 136.5 x 90 cm     | EA. |
| R7524-120C   | Vacuum Bag for Body Support, 120 liter fill  | 200 x 100 cm      |     |
| R7131-5NLTC  | SBRT Vacuum Bag for Knee Bridge, 5 liter fill  | 28 x 80 cm        | EA. |
| KSC-3        | Klarity Storage Cart, 3 Shelves  | 46 x 122 x 183 cm |     |
| KVM-500      | Klarity Vacuum Pump with AirSwitch™  |                   |     |
| KVP-100      | Klarity AirSwitch™   |                   |     |
| R7800-NAD    | Adaptor for Bionix™ Vacuum Pump. Allows Bionix Pump to be used with Klarity Vacuum Bags. |                   |     |
| R7800-QAD    | Adaptor for QFix™ Vacuum Pump. Allows QFix Pump to be used with Klarity Vacuum Bags.     |                   |     |

#### Klarity Ovens (Pages 68–73)

|            |  |                      |     |
|------------|--|----------------------|-----|
| KEL-1400   | Klarity AirFlow™ Oven, 110V convection oven, 40 kg | 80w x 88d x 41h cm   | EA. |
| KCOQ-1750W | Klarity® Mini Oven 110V convection oven, 15.5 kg   | 53 x 48 x 33 cm      | EA. |
| KELC100    | Stainless Steel AirFlow™ Oven Cart                 | 91.5 x 76 x 71 cm    | EA. |
| KEL-1200RK | Additional racks for Klarity AirFlow™ Ovens        |                      | EA. |
| KEL-113    | AirFlow™ CounterMount                              | 7.6w x 66d x 2.5h cm | SET |

#### Klarity Accessories (Pages 73–82)

##### Klarity BiteLok® (Pages 76-77)

|         |   |  |      |
|---------|---|--|------|
| RNB-100 | Klarity BiteLok® Kit. Contains BiteLok®, dental putty pack (2), QuickFit™ Tool, optional tongue depressor (2), optional tongue diverter (2) and removal tool. |  | EA.  |
| RNB-10  | Klarity BiteLok®. Contains BiteLok®, dental putty pack (2), QuickFit™ Tool  |  | 5/CS |
| RNB-11  | Klarity BiteLok® Tongue Accessories. Contains Long and Short Tongue Depressors, Right and Left Tongue Diverters, and removal tool                             |  | 5/CS |

#### Indexing Bars (Pages 78-79)

|           |  |  |     |
|-----------|--|--|-----|
| RNE-100AL | Turn-Lock Aluminum Indexing Bar for Exact™ Couch Top                               |  | EA. |
| RNE-102AL | Press-Lock Aluminum Indexing Bar for Exact™ Couch Top                              |  | EA. |
| RNE-103AL | Insert-Lock Aluminum Indexing Bar for iBEAM®, Novalis, and TomoTherapy® Couch Tops |  | EA. |
| RNE-104AL | C-Lock Aluminum Indexing Bar for Civco GE CT Couch Top                             |  | EA. |
| RE-630EA  | Aluminum Turn-Lock Indexing Bar for Klarity Optek™ Overlay for Elekta Couch Top    |  | EA. |
| RE-7E     | Aluminum Turn-Lock Indexing Bar for Klarity Optek™ Overlay for Varian Couch Top    |  | EA. |
| RE-7      | Aluminum Turn-Lock Indexing Bar for Varian TrueBeam Couch Top                      |  | EA. |
| RE-6E     | Universal Aluminum Indexing Bar for all Couch Tops                                 |  | EA. |

#### Klarity Bolus™ (Page 81)

|          |                     |            |     |
|----------|---------------------|------------|-----|
| RKB-3003 | Klarity Bolus™ 3mm  | 30 x 30 cm | EA. |
| RKB-3005 | Klarity Bolus™ 5mm  | 30 x 30 cm | EA. |
| RKB-3010 | Klarity Bolus™ 10mm | 30 x 30 cm | EA. |

#### Klarity ThermoSheets™ (Page 82)

|         |   |              |     |
|---------|---|--------------|-----|
| R-1600A | Klarity ThermoSheet™, solid, 1.6 mm               | 460 x 610 mm | EA. |
| R-3200A | Klarity ThermoSheet™, solid, 3.2 mm               | 460 x 610 mm | EA. |
| R-3200  | Klarity ThermoSheet™, solid, 3.2 mm               | 920 x 610 mm | EA. |
| R-4000A | Klarity ThermoSheet™, solid, 4.0mm                | 460 x 610 mm |     |
| R-4000E | Klarity ThermoSheet™, solid, 4.0mm                | 150 x 150 mm |     |
| R-4000F | Klarity ThermoSheet™, solid, 4.0mm                | 300 x 300 mm |     |
| R-3201A | Klarity ThermoSheet™ with 1% perforation, 3.2 mm  | 460 x 610 mm | EA. |
| R-3201  | Klarity ThermoSheet™ with 1% perforation, 3.2 mm  | 920 x 610 mm | EA. |
| R-2436A | Klarity ThermoSheet™ with 36% perforation, 2.4 mm | 460 x 610 mm | EA. |
| R-2436  | Klarity ThermoSheet™ with 36% perforation, 2.4 mm | 920 x 610 mm | EA. |
| R-3242A | Klarity ThermoSheet™ with 42% perforation, 3.2 mm | 460 x 610 mm | EA. |
| R-3242  | Klarity ThermoSheet™ with 42% perforation, 3.2 mm | 920 x 610 mm | EA. |

#### Klarity Bolus Pellets (Page 83)

|       |                       |                   |     |
|-------|-----------------------|-------------------|-----|
| R-601 | Klarity Bolus Pellets | 1-lb jar (500 g)  | EA. |
| R-603 | Klarity Bolus Pellets | 3-lb jar (1500 g) | EA. |

#### Bolx I™ Bolus Material with Polyurethane Skin (Page 83)

|              |                      |            |     |
|--------------|----------------------|------------|-----|
| KAC-31033030 | Bolx I™ Sheet .3 cm  | 30 x 30 in | EA. |
| KAC-31034040 | Bolx I™ Sheet .3 cm  | 40 x 40 in | EA. |
| KAC-31052    | Bolx I™ Sheet .5 cm  | 30 x 30 in | EA. |
| KAC-31102    | Bolx I™ Sheet 1 cm   | 30 x 30 in | EA. |
| KAC-31152    | Bolx I™ Sheet 1.5 cm | 30 x 30 in | EA. |
| KAC-31202    | Bolx I™ Sheet 2 cm   | 30 x 30 in | EA. |

#### Head Supports (Page 84)

|          |                                    |  |       |
|----------|------------------------------------|--|-------|
| R507-CF  | Carbon Fiber Head Support Set of 6 |  | SET/6 |
| R507-ACF | Carbon Fiber Head Support A        |  | EA.   |
| R507-BCF | Carbon Fiber Head Support B        |  | EA.   |
| R507-CCF | Carbon Fiber Head Support C        |  | EA.   |
| R507-DCF | Carbon Fiber Head Support D        |  | EA.   |
| R507-ECF | Carbon Fiber Head Support E        |  | EA.   |
| R507-FCF | Carbon Fiber Head Support F        |  | EA.   |
| R507     | Silverman Head Support Set of 6    |  | SET/6 |
| R507-A   | Silverman Head Support A           |  | EA.   |
| R507-B   | Silverman Head Support B           |  | EA.   |
| R507-C   | Silverman Head Support C           |  | EA.   |
| R507-D   | Silverman Head Support D           |  | EA.   |
| R507-E   | Silverman Head Support E           |  | EA.   |
| R507-F   | Silverman Head Support F           |  | EA.   |
| R520     | Prone Head Support                 |  | EA.   |

#### SteriTatt (Page 85)

|           |   |                     |     |
|-----------|---|---------------------|-----|
| KST-90001 | SteriTatt Black Ink Cartridge             | 25 per box          | EA. |
| KST-90002 | SteriTatt Black Ink Cartridge with Needle | 25 per box          | EA. |
| KST-90015 | SteriTatt Pink Ink Cartridge              | 25 per box          | EA. |
| KST-90050 | SteriTatt Black Ink Dropper. 3CC.         | 10 droppers per box | EA. |

| <b>SureMark™</b> (Page 85)    |   |                |     |
|-------------------------------|---|----------------|-----|
| KSU-SL-10                     | 1.0 mm lead ball on 15 mm label                           | 110 per box    | EA. |
| KSU-SL-12                     | 1.2 mm lead ball on 15 mm label                           | 110 per box    | EA. |
| KSU-SL-15                     | 1.5 mm lead ball on 15 mm label                           | 110 per box    | EA. |
| KSU-SL-18                     | 1.8 mm lead ball on 15 mm label                           | 110 per box    | EA. |
| KSU-SL-20                     | 2.0 mm lead ball on 15 mm label                           | 110 per box    | EA. |
| KSU-SL-25                     | 2.5 mm lead ball on 15 mm label                           | 110 per box    | EA. |
| <b>PowerMark</b>              |   |                |     |
| KSU-SL-30                     | 3.0 mm lead ball on 15 mm label                           | 50 per box     | EA. |
| KSU-SL-40                     | 4.0 mm lead ball on 15 mm label                           | 50 per box     | EA. |
| KSU-SL-50                     | 5.0 mm lead ball on 15 mm label                           | 50 per box     | EA. |
| Theremark                     |   |                |     |
| KSU-KM-25                     | 2.5 mm Immobilization Mask Marker                         | 110 per box    | EA. |
| <b>Clearline Scar Markers</b> |   |                |     |
| KSU-CL-8                      | 0.8 mm Clearline wire on diamond label                    | 336 cm per box | EA. |
| KSU-CL-10                     | 1.0 mm Clearline wire on diamond label                    | 336 cm per box | EA. |
| KSU-CL-15                     | 1.5 mm Clearline wire on diamond label                    | 320 cm per box | EA. |
| KSU-CL-20                     | 2.0 mm Clearline wire on diamond label                    | 320 cm per box | EA. |
| KSU-CL-25                     | 2.5 mm Clearline wire on diamond label                    | 203 cm per box | EA. |
| KSU-CL-30                     | 3.0 mm Clearline wire on diamond label                    | 165 cm per box | EA. |
| <b>SureMark ClearMarks</b>    |   |                |     |
| KSU-SL-MOT                    | Mole Marker - Metal-free semi-lucent ring on tabbed label | 110 per box    | EA. |
| KSU-SL-MO                     | Mole Marker - Metal-free semi-lucent ring                 | 110 per box    | EA. |
| KSU-SL-T1                     | Metal-free semi-lucent triangle                           | 110 per box    | EA. |
| KSU-SL-A2                     | Metal-free semi-lucent arrow                              | 110 per box    | EA. |
| KSU-SL-CR2                    | Metal-free semi-lucent crosshair label                    | 110 per box    | EA. |
| KSU-SL-SQ                     | Metal-free semi-lucent square                             | 110 per box    | EA. |
| <b>CT Mark</b>                |   |                |     |
| KSU-CT-W10                    | 1.0 mm CT wire on diamond label                           | 330 cm per box | EA. |
| KSU-CT-W20                    | 2.0 mm CT wire on diamond label                           | 330 cm per box | EA. |
| KSU-CT-23                     | 2.3 mm CT ball on label                                   | 110 per box    | EA. |
| KSU-CT-40                     | 4.0 mm CT ball on label                                   | 50 per box     | EA. |
| KSU-CT-CR3                    | 1.2 mm CT cross on round label                            | 50 per box     | EA. |
| <b>Comfort Mark</b>           |   |                |     |
| KSU-CC-15                     | 1.5 mm lead-ball conformable nipple marker                | 110 per box    | EA. |
| KSU-CC-25                     | 2.5 mm nonmetallic-ball conformable nipple marker         | 110 per box    | EA. |
| <b>SureMark Wire</b>          |   |                |     |
| KSU-SL-W3                     | 0.3 mm covered lead wire on diamond label                 | 336 cm per box | EA. |
| KSU-SL-W4                     | 0.4 mm covered lead wire on diamond label                 | 336 cm per box | EA. |
| KSU-SL-W8                     | 0.8 mm covered lead wire on diamond label                 | 336 cm per box | EA. |
| KSU-SL-W12                    | 1.2 mm covered lead wire on diamond label                 | 336 cm per box | EA. |
| KSU-SL-W15                    | 1.5 mm covered lead wire on diamond label                 | 336 cm per box | EA. |

| <b>PortalMark Labels</b> |   |                    |     |
|--------------------------|---|--------------------|-----|
| KSU-PM-100               | PortalMark Combination Sheet  | 50 sheets per box  | EA. |
| KSU-PM-200               | PortalMark Combination Sheet for darker skin surfaces                   | 50 sheets per box  | EA. |
| KSU-PM-125               | PortalMark Corner Sheet   | 50 sheets per box  | EA. |
| KSU-PM-225               | PortalMark Corner Sheet for darker skin surfaces                        | 50 sheets per box  | EA. |
| KSU-PM-150               | PortalMark Isocenter/Field Line Sheets                                  | 50 sheets per box  | EA. |
| KSU-PM-250               | PortalMark Isocenter/Field Line Sheets for darker skin surfaces         | 50 sheets per box  | EA. |
| KSU-PM-300               | PortalMark Set Up Points  | 110 sheets per box | EA. |
| KSU-PM-350               | PortalMark Set Up Points for darker skin surfaces                       | 110 sheets per box | EA. |
| KSU-PM-400               | PortalMark Set Up Points, alternative adhesive                          | 110 sheets per box | EA. |
| KSU-PM-450               | PortalMark Set Up Points for darker skin surfaces, alternative adhesive | 110 sheets per box | EA. |
| KSU-PM-325               | PortalMark Isocenters   | 110 sheets per box | EA. |
| KSU-PM-375               | PortalMark Isocenters for darker skin surfaces                          | 110 sheets per box | EA. |
| KSU-PM-425               | PortalMark Isocenters, alternative adhesive                             | 110 sheets per box | EA. |
| KSU-PM-475               | PortalMark Isocenters for darker skin surfaces, alternative adhesive    | 110 sheets per box | EA. |
| <b>BeautyMark</b>        |   |                    |     |
| KSU-BL-W4                | 0.4 mm lead wire on BeautyLine Butterfly Label                          | 336 cm per box     | EA. |
| KSU-BL-MO                | Clearmark mole marker on BeautyLine Butterfly Label                     | 110 sheets per box | EA. |
| KSU-BL-15                | 1.5 mm lead ball on BeautyLine Butterfly Label                          | 110 sheets per box | EA. |
| KSU-BL-20                | 2.0 mm lead ball on BeautyLine Butterfly Label                          | 110 sheets per box | EA. |
| <b>VisionMark</b>        |   |                    |     |
| KSU-V-20                 | 2.0 mm Visionline ball on label   | 110 per box        | EA. |
| KSU-V-25                 | 2.5 mm Visionline ball on label   | 110 per box        | EA. |
| KSU-V-30                 | 3.0 mm Visionline ball on label   | 50 per box         | EA. |
| KSU-V-40                 | 4.0 mm Visionline ball on label   | 50 per box         | EA. |
| KSU-V-50                 | 5.0 mm Visionline ball on label   | 50 per box         | EA. |



## Contact

For more information or to place an order,  
please contact your sales representative:

Klarity  
600 Industrial Parkway  
Heath, OH 43056  
Toll-free: 877-599-8905  
Tel: 740-788-8107  
Fax: 740-788-8109  
[sales@klaritymedical.com](mailto:sales@klaritymedical.com)